



**JB FAIR**

*Order  
Guide Book*



# CONTENTS



## Order Guide Book

### 01 Food

- 004 Himchanmaru
- 006 Unique Biotech Co., Ltd
- 008 WellBeing Farm Co.
- 010 The Goeun Co., Ltd
- 012 Sanmaaeul Young Farming Union
- 014 ARIULHYEONFOOD.Co.Ltd
- 016 JANGSU RED GINSENG
- 018 SCDD CO., LTD.
- 020 JIAM
- 022 Namyoung Pharm. Co., Ltd
- 024 Hankook Ginseng
- 026 ONGGOJIB
- 028 Chunyunco
- 030 B&G Life Co., Ltd.
- 032 GreenRoad
- 034 Sun n Pine Co.Ltd.
- 036 GELYO Co., Ltd.
- 038 HONESTFOOD
- 040 Younginbio LLC
- 042 Sungone PCM Co., Ltd.

### 02 FashionBeauty Cosmetics, Consumer goods

- 044 Humanpia Costech Co., Ltd.
- 046 HISOL Co., Ltd.
- 048 GOES
- 050 OneAsiaCompany
- 052 DEQUA.Co.,Ltd.
- 054 YENA Co., Ltd
- 056 Airlab Co.,Ltd.
- 058 AR&G CO., Ltd

- 060 Nj Company
- 062 SAEBOMKOREA
- 064 HOME EDITION MYUNGJIN
- 066 YoungShin Stone Co., Ltd.
- 068 NOSTALGIA
- 070 ONESKIN COSMETICS

### 03 others

- 072 Juhyun Co.,LTD.
- 074 Byuck Jin
- 076 Giheung Industry
- 078 Puremem Co., Ltd.
- 080 POONGCHANG
- 082 National C&D Co., Ltd.
- 084 DAE SUNG MEDICAL CO.LTD
- 086 CT&S CO.,LTD
- 088 JUNG ANG STEEL CO., INC.
- 090 INECO Inc.
- 092 USECHEM CO.,LTD.
- 094 JEONGSEOK Chemical
- 096 CyberMedic Co., Ltd.
- 098 DAESHIN AIR\_CON, CO.,LTD
- 100 HANDOK ELEVATOR CO., LTD.
- 102 Haegon





# Himchanmaru

**Company Name :** Himchanmaru

**CEO :** Ha Teagul

**Website :** <http://himchanmaru.com>

**Address :** 15 Honamcheol-ro, Sintaein-eup, Jeongeup-si, Jeollabuk-do, Republic of Korea

**Email :** htk1002@hanmail.net

**Phone :** +82 1566-4171

## Company Profile

Himchanmaru manufactures and sells healthy food. We are a solid patented company dedicated to research. As an award-winning company, we have been featured in the media many times. We manufacture and sell health extracts and pills. Health extracts refer to the infusion of healthy medicinal herbs by boiling, while health pills refer to ground beneficial medicinal substances made into pills. Health extracts and health pills are also utilized as drugs or health functional food. We manufacture only in the range of food. As they are food products, anyone can eat them without worrying about side effects.

When creating a health extract, the accompanying herbal ingredients and method of brewing are equally important as the main ingredient. We hold patent rights related to snail and chicken feet extracts. This is why we are the top-selling company of snail extract online.

We have also been broadcasted many times. Although they belong to the general food category instead of health functional food, our health extracts are beneficial to people's health.

The name of health extracts, utilized as food, is decided by the main ingredient. Himchanmaru handles two types of health extracts: snail and chicken feet. Snails and chicken feet are boiled down along with their matching herbal ingredients.

The health extract patent we hold concerns the mixing of the ingredients and extraction technology. In Korean traditional medicine, all food items have a compatibility level. It is important to mix all ingredients to highlight the benefits of the main ingredient while improving the weak ones. Another thing worth mentioning is our extraction method. Normal extractions are carried out by boiling the ingredients in hot water for a few hours. In contrast, Himchanmaru products are extracted in low temperature under constant pressure for over 30hr. By matching ingredients and extracting them at low temperature, our products create an excellent flavor.

Our products are made with pure herbal ingredients and additives are rarely added. We believe that additives are not beneficial to health. That is why we will continue to restrain from using additives when developing new products.



### WowDrink Plus

If you want to make a healthy body without side effects, it is usually better to eat healthy food than medicine. WowDrink Plus is a superior health food that anyone can eat. WowDrink Plus is one of himchanmaru's snail herbal extracts, the number one product sold online in Korea. It is a high-end product with the addition of 'galanga' which is known for its good health such as anti-cancer effect. Wow is the same pronunciation of the old times snail in Korea. To mean amazingly good food, I marked it as wow with similar pronunciation. Snail juice is an unfamiliar food overseas, but it is a familiar ingredient in Korea because it is mentioned in old Korean medical books.(Dong-uibogam, Bonchogangmog.)In Korea, it is especially famous for the health food that athletes eat a lot. All snails that enter are from Korea. In addition to snails, about 20 oriental medicine ingredients (hubs) that go well with snails are added based on traditional medicine. This food is patented in Korea and passed the FDA standard. It does not preservatives, artificial flavors, colorant and additive. The snail content is about 74%. In Korea, we have achieved No. 1 online sales (based on the number of post-sale sales) and No. 1 in Customer satisfaction. It is also a sponsor company of the 'World Championship Korea Preliminary Round' (Power Lifting).



### BongchuDrink Plus

BongchuDrink Plus is a new product that developed the previously popular BongchuDrink. There was some improvement in recipe overall by adding a lot of Thai galanga. If you want to make a healthy body without side effects, it is usually better to eat healthy food than medicine. BongchuDrink Plus is a superior health food that anyone can eat. Galanga is a very healthy food such as anti-cancer effect. It suits the bongchuDrink. Original and is included in the materials for the luxury BongchuDrink Plus.

The name of this juice is BongchuDrink Plus. Bongchu is a word that means "oriental phoenix" and is also used to express chickens favorably in oriental. Chicken feet juice may be unfamiliar ingredients abroad, In Korea, it was introduced to TV as a food that I eat when my bone joint is painful or I have a problem. It is also mentioned in old medical books in Korea, so people often eat it as a healthy food.(This product indicates that it is food, not medicine.) The main ingredients for BongchuDrink are all Korean chicken feet. In addition to chicken feet, we have added more than 20 different herbals that go well with chicken feet based on traditional medicine.



### Tuntun Hwan

This product is a type of Healthy pilule in Korea.'Health-hwan' refers to a product made like a pill that is finely ground with a good medicinal ingredient.

It is one of the Health-hwans made under six representative themes that can improve health with food.

It was created after a long period of research with cooperative researchers from the Oriental Medical Doctor and food research companies. Most of the raw materials that go into much are from Korea.

It stressed the meaning of the product's name is 'A strong body'. We made our own special recipe with natural herbal ingredients that make bones and joints good. Food for people with joint pain or weak bones. Like a dish that tastes completely different with a little content, health food can also be made healthier according to the recipe. I added good ingredients, and no additives for smell or taste. This product is food, not medicine, and passed FDA standard.



**Company Name :** Unique Biotech

**CEO :** Heo Yonggap

**Website :** <http://uniquebiotech.co.kr>

**Address :** 310 Daehak-ro, Yeongdong-eup,  
Yeongdong-gun, Chungbuk, 29131, Korea

**Email :** [ubtc@uniquebiotech.co.kr](mailto:ubtc@uniquebiotech.co.kr)

**Phone :** +82 63-838-8877

### Company Profile

Unique Biotech is a bio-venture company specializing in developing and producing the safe and unique food products of the highest quality. In addition to participating in various government policy assignments and presenting dissertations, we have been developing various patented technologies on a domestic & international level to expand the scope from healthy & functional food products to livestock & fish farm feed.

Building upon these experience, we here at Unique Biotech are taking our small but vigorous step towards our goal of providing solutions to such issue, and hope that you would provide us with encouragement & support for our endeavor with a common and shared hope.

### Unibee Propolis



A water-soluble propolis healthy food that does not contain alcohol and does not contain harmful emulsifiers or chemical compatibility additives. 30ml, in the form of a spoid. This product is produced using the technology of the patent registered under No. 10-1661495 entitled "the manufacturing method of eco-friendly, natural honey-based, alcohol-free, water-soluble propolis", which has no alcohol residue and contains no emulsifiers or chemical additives. This product is free of any substances that may cause harm to the body, so that it can be consumed by people of all ages safely and conveniently. Add mineral water, milk, yogurt, or juice to 0.77g(0.77ml) of the product each time. Take the diluted solution three times a day.

### Unibee Propolis Spray



A healthy functional food made from a water-soluble propolis that does not contain alcohol and does not contain any harmful emulsifier or chemical compatibility additive. It is easy to carry and can be sprayed into the oral cavity at any time and anywhere. 20ml, in the form of a spray bottle. This product is produced using two proprietary technologies, one being the manufacturing method of the raw material embodied by the patent No. 10-1661495 entitled "the manufacturing method of eco-friendly, natural honey-based, alcohol-free, water-soluble propolis" and another being the technology realized by the patent No. 10-1765455 entitled "the manufacturing method of a highly-concentrated water-soluble propolis formulation in a spray form". This product comes in a form that can spray its highly-concentrated water-soluble propolis solution directly into the mouth safely and conveniently. Its tasteful and fragrant flavor appeals to everyone, ranging from children to elderly people to patients regardless of their age. This product is beneficial for the protection of the mouth, throat, and bronchial tube; so it is recommended for those whose bronchial tube is weak, singers, politicians, and teachers who generally use their throat a lot, taxi, bus, truck drivers, and workers who do their jobs in dusty environments.

### Unibee Propoli Toothpaste



The oral care professional toothpaste made from water-soluble propolis, which does not contain alcohol and does not contain any emulsifier or chemical additive. Product registered with the US FDA as OTC items. 120g in a tube. This product is effective for dental plaque removal, whitening and strengthening. It keeps oral cavity clean and fresh. Prevention of cavity, removal of bad breath and aesthetic effects heightened. Also effective for prevention of gingivitis, periodontitis, periodontal diseases, and gum diseases. Apply a proper amount to toothbrush and brush your teeth.



**Company Name :** WELLBEING FARM

**CEO :** Lim Song

**Website :** <http://jirisanproduce.com>

**Address :** 27, Donggal-gil, Ayeong-myeon,  
Namwon-si, Jeollabuk-do, Republic of Korea

**Email :** [jirisanproduce@daum.net](mailto:jirisanproduce@daum.net)

**Phone :** +82 63-626-7028

### Company Profile

WellBeing Farm Co. is a food manufacturing company located in Jiri Mountain. We deliver agricultural product in the way to consume convenient and easy way. WellBeing farm has several principles that we always keep in mind. First, we provide easy slow food in reasonable price. Second, we don not release any product that we do not consume ourselves. Last but not least, we desire to provide healthy working place. It would be really shame if it is not fun to work in the place where you don't want to be. We believe that happy working place will make every family and society healthy. We are working today as well with those principles in mind.



### Pu Chung

Pu Chung(Roasted Korean Hot Pepper)' is a roasted Chung Yang chilli break down to the powder form which could used in many cooking process or on the table. Put it on the various dishes such as stake, chicken, pasta, noodle, salad, soups or other dishes to give the dish spicy embodied flavo.

Korean Chung Yang Chilli has spicy taste with unique flavor. 'Pu Chung' boosts this taste with the roasting procedure. You can now really enjoy Korean spicy food with 'Pu Chung'



### Mom's Japchae

Japchae is one of famous Korean traditional dish. It requires time and many procedures to make. Therefore, it was a dish that was put on table when its holiday or special quest visiting. Mom's Japchae' is a convenient food which provides Japchae in 15 minutes. It contains 6 kinds of vegetable including the spinach, sweet potato noodles, sauce and the sesame oil. First, put ther vegetable and sweet potato noodles in the hot watere for about 10 minutes. Put it on the hot fried pan with sauce and the sesame oil and stir fry for about 2~3 minutes. The easy and taste Japchae is done.



**Company Name :** Deogoun

**CEO :** Kim Ki Soo

**Website :** [www.gogufarmshop.com](http://www.gogufarmshop.com)

**Address :** 24-1, Sinmok-ri, Hamna-myeon,  
Iksan-si, Jeollabuk-do, Korea

**Email :** [kks9803@naver.com](mailto:kks9803@naver.com)

**Phone :** +82-63-841-9803

### Company Profile

The Goeun is a manufacturer of Scoop-up Roasted Mashed Sweet Potatoes. We grow sweet potatoes in Hamnamyeon, Iksan-si, Jellabokdo for ourselves and sell processed sweet potatoes. At about the 1,400m<sup>2</sup> processing plant, two production employees work and automated facilities are equipped for hygienic production. Monthly production capacity is 20,000 units. We plan the expansion of production facilities for the increase of capacity up to 50,000 units per month. In 2013, we launched a brand called 'Sweet Me', scoop-up roasted mashed sweet potatoes. It is made of 100% pumpkin sweet potatoes. As it is processed in the sterilization system and any preservatives and chemical additives are added, it can be stored for about 10 months at room temperature. Sugar-free Sweet Me can be enjoyed by people of all ages as it preserves the taste of natural food. Thanks to convenient storage, it can be enjoyed during outdoor activities. It is loved for snacks, diet food, baby weaning food and healthy food.

Representation



### Scoop-up Mashed Sweet Potato SweetMe

Introduction to product :

- SweetMe is made of 100% pumpkin sweet potatoes with no additives. As sweet potatoes are ripened in low temperature, the calorie of roasted ones is 135Kcal (boiled sweet potatoes : 305Kcal per 110g). As a low GI food, they are healthy food and good for diet food with longer feeling of fullness.
- As processed in the sterilization system, Sweet Me can be stored for about 10 months at room temperature.
- With No sugar, No Preservatives, No Chemical Additives, SweetMe is a natural food, good for the body and safe to eat.
- As sweet potatoes are rich in Vitamin A, they are good for your skin and prevents aging. Dietary fiber and jalapin help relieve constipation as well.
- The product may give a sour taste with 100% pumpkin sweet potatoes. This is because extract of jalap, a healthy substance, is naturally fermented. As it is nothing to harm, you can enjoy it safely.



**Company Name :** Sanmaeul Young Farming Union

**CEO :** Park Minchul

**Website :** www.sanmaeul.co.kr

**Address :** 6-8 Sangpyeongdang 1gil, Bunam-myeon, Muju-gun, Jeollabuk-do, Republic of Korea

**Email :** san\_maeul@naver.com

**Phone :** +82 10-3898-1415

**Company Profile**

The young people who were preparing to get a job become farmers and start farming and selling them. We are making balloon flower products good for bronchitis. It is located in Muju-gun which is also called a clean area in Korea.

Jeonbuk Business Center New Delhi

**Bellflower Syrup with Pear, Ginger and Honey**



- 1.SUMMARY  
It is a traditional oriental medicine, good for people who suffer from bronchial disease.
- 2.FEATURES
  - It helps in removing cough and phlegm.
  - It contains saponin, which strengthens the lungs and helps boost your strength.
  - Good for preventing colds and protecting your respiratory system.
  - It is composed of bellflower, pear, ginger and honey
  - It prevent dementia and improve memory.
  - It also protect us from air pollution.
- 3.SPECIFICATION & FUNCTION
  - Product made from powder of dried 3 year-old-bellflower is good to drink mixed with milk or with smoothie yoghurt.
  - Take 2-3 teaspoons per day (for children, 1/2 tablespoon)

**Bellflower Root Slice Marinated in Honey**



- 1.SUMMARY  
It is a traditional oriental medicine, good for people who suffer from bronchial disease.
- 2.FEATURES
  - It helps in removing cough and phlegm.
  - It contains saponin, which strengthens the lungs and helps boost your strength.
  - Good for preventing colds and protecting your respiratory system.
  - It is composed of bellflower root and honey
  - It prevent dementia and improve memory.
  - It also protect us from air pollution.
- 3.SPECIFICATION & FUNCTION
  - Take 20-30g per day

**Bellflower Powder**



- 1.SUMMARY  
It is a traditional oriental medicine, good for people who suffer from bronchial disease.
- 2.FEATURES
  - It helps in removing cough and phlegm.
  - It contains saponin, which strengthens the lungs and helps boost your strength.
  - Good for preventing colds and protecting your respiratory system.
  - It is solely composed of pure bellflower powder
  - It prevent dementia and improve memory.
  - It also protect us from air pollution.
- 3.SPECIFICATION & FUNCTION
  - This product is made of 100% highly concentrated 3 year-old-bellflower.
  - Take 2-3 teaspoons per day (for children, 1/2 tablespoon)



**Company Name :** Ariul Hyeon Food

**CEO :** Sin Hyeonjoo

**Website :** <http://damgaon.co.kr/>

**Address :** 179 Daehak-ro, Gunsan-si, Jeollabuk-do,  
Republic of Korea

**Email :** [jhs0193327092@nate.com](mailto:jhs0193327092@nate.com)

**Phone :** +82 63-468-7337

### Company Profile

Ariul Hyun Food has maintained its business so far with the CEO's experience in the same industry and passion for traditional food, and with the motto of "Remember Mom's Hand Taste in Damgaon," it thoroughly manages all processes from warehousing to packaging, making a product that anyone can eat with confidence. We strive to create jobs for the vulnerable by actively hiring those who are vulnerable to employment, and to promote traditional Korean food to our neighbors and multicultural families through regular donation activities and kimchi-making events.



**Napa Cabbage Kimchi (Pogi Kimchi)**



**Aborted Kimchi (Mat Kimchi)**

#### 1. SUMMARY

-Kimchi is made with low salt pickling, salted fish, and broth, which determine the taste of kimchi, and contains the taste of mom.

#### 2. FEATURES.

- With participation in the sodium reduction project, it is not pickled with about 8% of low salt.
- It is a kimchi that has a great taste because all the ingredients in the broth are dried at high temperatures and then powdered and added to the seasoning.
- Reduce sodium by using salted seafood, broth, and stir-fried salt, which determine the taste of the seasoning, and the texture of cabbage is live kimchi.
- It is Kimchi which is certified as traditional food.
- Aborted Kimchi(Mat Kimchi) is seasoned with cabbage cut into bite-sized pieces, and is popular among single-person households, honbab, and campers who prefer simple food because it is easy to eat and easy to move.

#### 3.SPECIFICATION & FUNCTION

- It is made of kimchi using cabbage grown for about 90 days, so it is not tough but not tough texture.
- Kimchi is rich in lactobacillus, so it digests well, and red pepper in kimchi seasoning is rich in vitamins.



# 장수홍삼

**Company Name :** JANGSU RED GINSENG

**CEO :** Lee Soonok

**Website :** www.redginseng.info / http://장수홍삼.kr

**Address :** 56 baksil-gil, Wolgok-ri,  
cheoncheon-myeon, Jangsu-gun, Jeollabuk-do, Korea

**Email :** goodhongsam@gmail.com

**Phone :** +82-63-352-0641

## Company Profile

Jangsuredginseng Co., Ltd, since its establishment in 1995, is developing, producing and selling various kinds of Ginseng. Red Ginseng products and Health functional foods made with the main raw material of Korean special product(Ginseng, Red Ginseng). Jangsuredginseng is grown in high altitude alpine farms with large daily temperature fluctuations, resulting in roots with strong texture and good taste and aroma. Jangsuredginseng products are made with only high-quality Korea Ginseng grown directly on Jangsuredginseng farms under strict quality control. Jangsu area where Jangsuredginseng is located is a producing district of Korea Ginseng. With Red Ginseng Research Institute, Red Ginseng cluster, Korean traditional medicine department of a university etc, located in this area as the clearzone.



## Red ginseng Drink / pouch type

**Country of Origin :** Jangsu-gun, Chunbuk Province in Korea

**Description :** It is a pure red ginseng extract boiling down, with devotion in a low temperature for 48 hours, red ginseng grown in Jangsu, a clean high altitude region. It boils down six-year-old red ginseng grown by ourselves.

Our products can be enjoyed anytime and anywhere without inconvenience of boiling down ginseng for many hours by yourselves. Ginseng grown in a high altitude mountainous region has a firm texture and distinctive taste and flavor. Since the soil of high altitude mountainous region contains a lot of humus and has better conditions, it produces higher quality ginseng.



## Red ginseng Extract

**Country of Origin :** Jangsu-gun, Chunbuk Province in Korea

**Description :** It is a pure red ginseng extract boiling down, with devotion in a low temperature for 48 hours, red ginseng grown in Jangsu, a clean high altitude region. It boils down six-year-old red ginseng grown by ourselves. Our products can be enjoyed anytime and anywhere without inconvenience of boiling down ginseng for many hours by yourselves. Ginseng grown in a high altitude mountainous region has a firm texture and distinctive taste and flavor. Since the soil of high altitude mountainous region contains a lot of humus and has better conditions, it produces higher quality ginseng.



**Company Name :** SCDD CO., LTD.

**CEO :** Kang Byeong Soo

**Website :** www.scdden.co.kr

**Address :** 43-18, Haepal-gil, Gunsan-si,  
Jeollabuk-do, Korea

**Email :** nick@scdd.co.kr

**Phone :** +82-63-453-8504

### Company Profile

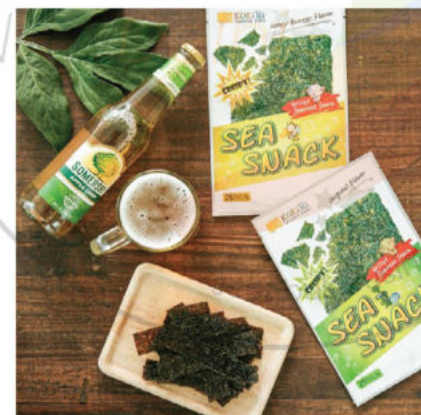
SCDD was founded in 2011. It has been grown up continuously and last year we have achieved sales as USD 12 million for exporting. We can watch all process, react faster with customer feedback, be able to offer better quality, and better price.



### KOKIRI Double Roll Seaweed Snack

Introduction to product(Specifications)

: Grilled seaweed on the plate of iron. Export to Eastsouth Asia, China and Taiwan. Raw material are Laver(Korea) 95, Seasoning 5%. Ingredient are the calories less than 25Kcal and no Fat, not oil. Flavor are the Original, Hot&Spicy, Bul-gogi(BBQ), Honeybutter.



### KOKIRI SEA SNACK

Introduction to product(Specifications)

: Grilled seaweed on the plate of iron. Export to Eastsouth Asia, China and Taiwan. Raw material are Laver(Korea) 95, Seasoning 5%. Ingredient are the calories less than 25Kcal and no Fat, not oil. Flavor are the Original, Hot&Spicy, Bul-gogi(BBQ), Honeybutter.



**Company Name :** JIAM

**CEO :** Lee Seungyeol

**Website :** <http://shop3.misojiam.cafe24.com>

**Address :** 105, Iksan CCI, 187 Inbuk-ro, Iksan-si,  
Jeollabuk-do, Republic of Korea

**Email :** ymcalee@naver.com

**Phone :** +82 10-6635-2929

#### **Company Profile**

Jiam is a natural cosmetic manufacturing, exporting and pharmaceutical company.



#### **Jiam Deep Rooted Shampoo**

Shampoo that makes hair healthy and shiny by strengthening the hair roots with herbal ingredients. 350ml



#### **Sevevien Activity Probiotics Cream**

Functional cosmetics containing probiotics and horse oil which helps in wrinkle improvement and whitening effect. 50ml



#### **King Premium Jeju Tangerine Vitamin C**

Vitamin C Supplement containing calcium, Vitamin C and Xylitol. 500g



**Company Name :** Namyong Pharm. Co., Ltd.

**CEO :** Jeon Sun Ae

**Website :** www.nyherb.co.kr

**Address :** 93, Mugeum-ro, Muju-eup, Muju-gun, Jeollabuk-do, Korea

**Email :** muju2011@naver.com

**Phone :** +82-63-322-4985

### Company Profile

Namyong Pharmaceutical company is carefully selects medicinal ingredients that is grown in Muju's clean area Dukyoo Moutain and natural environenet of Muju-gu-chun-dong's high mountains and deep valleys, manufacturing specialized healthy food products. From selection of raw materials, manufacturing and packaging, product is proceed through a thorough quality inspection and database through the affiliated research lab. Namyong pharmaceutical company staff and leaders are doing the best everyday in order to produce manufactured goods using safe raw material production and Gastrodia elata Blume which is the local speciality product.

### Imperial Family Jingo

Introduction to product(Specifications)

: Royal Jingo is produced ipon concentration of high quality Gastrodia elata Blume and the representative Korean medicinal herbs including ginseng, Tuckahoe, live foxglove, and honey. It is a prestigious produced by the same traditional method to Kyungokgo, which is one of three best medicines in Donguibogam[principles and Practice of Eastern Medicine], of the patient processes including boiling down for 3 days, cooling in the well for a day, and heating in the water bath for additional day. The sophisticated packaging into sticks enables easy consumption and handling.



### Cheonma Ferment Paste

Introduction to product(Specifications)

: Gastrodia elata Blume Fermentation Paste is a fermented and concentrated product made by Gastrodia elata Blume produced in Muju where is the clean city and high quality domestic materials only. It is produced by unique patented technology of Namyong Parmaceuticals without sugar, pigments and preservatives. It is a health food that can be consumed like jam with various foods. The sophisticated packaging into sticks enables easy consumption and handling.



### Balloonflower Fermentation Paste

Introduction to product(Specifications)

: Balloonflower Fermentation Paste is made from Balloonflower which has abundant saponin and high quality domestic materials only. It is the product without adding sugar, pigments and preservatives, and everyone without distinction of sex and age can easily take it and feel its favorable taste and flavor. It is a health food that can be consumed like jam with various foods. The sophisticated packaging into sticks enables easy consumption and handling.





**한국인삼**  
HANKOOK GINSENG

**Company Name :** Hankook Ginseng

**CEO :** Lee Soonok

**Website :-**

**Address :** 78 Sijang-gil, Jinan-eup, Jinan-gun,

Jeollabuk-do, Republic of Korea

**Email :** bik322@hanmail.net

**Phone :** +82 63-433-1140

**Company Profile**

Korea Ginseng has produced and marketed highly quality ginseng, which is a Korean specialty product, for more than 40 years. Korea Ginseng is located in Jinan, Jeollabuk-do, which is the only red ginseng specialty district in Korea. The product range includes red ginseng, Taegeuk ginseng, white ginseng, raw ginseng, red ginseng tablets, and red ginseng pouch. Based on rational prices, it supplies high quality ginseng products to domestic and foreign markets, making it well-known worldwide and contributing to the public health.



**6-year Celestial Ginseng**

This product contains 1200g of the highest quality red ginseng. Celestial Ginseng has no crack or dent in its body and has more than one well-grown legs. Crack should be less than one-third of the leg and three fourth of the body in length. Internal pores and brightness should be less than 0.5mm in diameter and longer than 10mm. The color should be uniformly in light yellowish brown or light reddish brown. On the peel, yellow and white area should be less than one-fourth of the total. All of these are the condition to become the highest quality red ginseng.



**Company Name :** ONGGOJIB

**CEO :** Lee Giwon

**Website :** <http://onggojib.koreasme.com>

**Address :** 34, Seowang-gil, Napo-myeon, Gunsan-si, Jeollabuk-do, Korea

**Email :** ong8877@hanmail.net

**Phone :** +82-63-453-8877

### Company Profile

To preserve the taste of tradition... Onggojib works hard to protect our traditions. Resolute to protect our traditions, we have inherited the traditional method of making sauces to perfect the deep flavors of Korean cuisine. Every step is manual, using beans produced in Korea as ingredient. They are fermented in a red clay room, molded into cubes and strung together, then mixed with summer squash (mushroom powder) fermented for a year with barley powder. The mixture is then fermented for another year in a crock, bringing that rich taste of tradition.



### Pumpkin Barley Soybean Paste

Introduction to product(Specifications)

Naturally fermented traditional Korean soybean paste. This soybean paste is made from solely homegrown agricultural products—such as mature pumpkin, pepper seed powder, and barley powder—and incorporates Onggojib's expertise and originality.

- Please store it in breathing pottery under refrigeration. This can maintain the maturity of the soybean paste at low temperature, thus further improving its taste.



### Traditional Gochujang Gold

Introduction to product(Specifications)

A spicy and agreeable taste floods your mouth! The use of sun-dried pepper and sweet rice further improves the color of the pepper paste, and results in a more upgraded taste. This product is a proof of Onggojib's unique expertise in making Korean red pepper paste, which meets the tastes of different generations.



### Onggojib Fish Soy Sauce

Introduction to product(Specifications)

Naturally fermented soy sauce made using traditional methods. This premium fish soy sauce is made from the mixture of freshly made soy sauce and "aekjeot," a fermented fresh anchovy sauce. This seasoned mixture then undergoes fermentation. The TN level is 1.8, resulting to the world's most agreeable taste.



**Company Name :** Chunyun Co

**CEO :** Park Yonghwan

**Website :** chunyun.alltheway.kr

**Address :** 1-101, 1043-7, Kongjyui patjyui Ro,  
Iseo Myeon, Wanju Gun, Jeollabuk-do, Korea

**Email :** younhe01@hanmail.net

**Phone :** +82-63- 288-5350

### Company Profile

By combining traditional and contemporary techniques, we developed functional food ingredients that are suitable to Koreans who seek a change in their Western lifestyle.



### Herbal Lotus Leaf Tea

**Introduction of product (Specifications)**

: Lotus leaf tea is effective in stabilizing the mind and the body, and in preventing insomnia. Its strong antioxidant properties offer a great anti-aging effect. Moreover, it helps in the release of body wastes, thereby preventing the symptoms of swelling.

**Features and Advantages**

: We used only the finest lotus leaves that have been certified as pesticide-free and environmentfriendly. These lotus leaves were strictly selected by a monk cook at Seonunsa Temple. In cooperation with the Jeonju Biomaterials Institute and by combining proper amounts of Stevia, funnel seeds, lemongrass, rosemary, etc., we have successfully developed this herbal lotus leaf tea that is appealing to many customers because of its familiar aroma.

**The Others**

: This herbal lotus leaf tea is a caffeine-free, healthful functional tea. Brew in 2 L of water at 50~60oC for 30~60 s. For excellent taste, wait until the water changes into a light green color. For second brewing, use 70oC water. The tea can be brewed up to three times.



### Herbal Lotus Leaf Tea

**Introduction of product (Specifications)**

: Lotus is used to create noodles that come in five different colors: lotus leaf noodles, sweet pumpkin noodles, cactus noodles, brown glutinous rice noodles, and black rice noodles. These noodles will delight the eyes and protect the five major organs of the body. They are also considered as products that boost people's health and well-being.

**Features and Advantages**

: Green : <Lotus leaf > Liver (anti-aging, helps control diabetes, helps overcome obesity) Red : <Cactus > Heart (boosts health and longevity)  
Yellow : <Sweet pumpkin > Stomach (anti-cancer, recommended for students, boosts stamina)  
White : <Brown glutinous rice > Lungs (boosts immunity, lowers the risk of allergy)  
Black : <Black rice > Kidney (recommended for those with a weak body constitution, strengthens the bones)

**The Others**

: The fermented Obang Noodles can be easily digested and would not cause your stomach to be upset. The soft and chewy texture of the noodles is retained even after it is cooked. Moreover, it does not have strong flour smell and any unpleasant odor.



**Company Name :** B&G Life Co., Ltd.

**CEO :** Kim Young Ju

**Website :** www.bng.life

**Address :** Jeonju University, 303, Cheonjam-ro,  
Wansan-gu, Jeonju-si, Jeollabuk-do, Korea

**Email :** info@bng.life

**Phone :** +82-63-222-0883

### Company Profile

To grow as a global company, B & G LIFE Co., Ltd. We are concentrating on the development and production of finished products using medicinal crops of each country and Korean ginseng.



### SUNSIM (Processed ginseng roots keep original form)

Introduction to product(Specifications) :

1. Daejeon University Enterprise Institution NO
2. Strengthened ingredients by stirring Korean ginseng and Southeast Asia medicinal crops
3. Improved productivity by cutting raw material processing time

Features and Advantages :

1. Ginsenosides of Korean ginseng strengthened (RG1, Rg3, RK1, etc..)
2. Strengthen antioxidant ingredient of Palmyra palm Jaggery
3. Reduces the bitterness inherent in ginseng, offering a good flavor to all generations

Patent registration/patent application :

1. Mix ginseng and Palmyra palm to make ginseng preserved in jaggrey Patent registration(10-1791419)
2. Tech Ginseng process by using in vevo complex water Application(10-2016-0179244)
3. Process ginseng with Black ginger preservative Application(10-2017-0034614)
4. Process ginseng with Moringa preservative Application(10-2017-0034626)
5. Extraction mix portable container and mix process Application(10-2017-0110134)
6. Mix ginseng and Palmyra palm and Palmyra seeds to make ginseng preserved in jaggrey Application(10-2017-0123159)
7. SUNSIM Application(40-2016-0113732)





**Company Name :** GreenRoad

**CEO :** Kim Jiyong

**Website :** <http://greenroad.farm>

**Address :** F356 Korea National Food Cluster,  
100 Gukgasikpum-ro, Wanggung-myeon, Iksan-si,  
Jeollabuk-do, Republic of Korea

**Email :** [greenroad6943@hanmail.net](mailto:greenroad6943@hanmail.net)

**Phone :** +82 63-2913-9357

**Company Profile**

As a resident of the Korea National Food Cluster, GreenRoad is a food manufacturing company that manufactures, processes and sells food. We manufacture a wide variety of teas, starting with coffee substitutes made from domestic green beans.

Jeonbuk Business Center New Delhi



**KingBean Drip**

Introduction to product (Specifications)

- Zero caffeine coffee substitute tea using 100% of Korean Jack beans (Sword bean)
- Drip form
- It is a product that can be easily used because it is poured with hot water in the same way as drip coffee.
- 1 box, 48g (6g\*8)



**KingBean Capsule**

Introduction to product (Specifications)

- Zero caffeine coffee substitute tea using 100% of Korean Jack beans (Sword bean)
- Nespresso compatibility capsule form
- Can be used on Nespresso capsule machines.
- You can eat a variety of Americano, latte, apocato, and more.
- 1 box, 40g (5g\*8)



**KingBean Liquid Stick**

Introduction to product (Specifications)

- Zero caffeine coffee substitute tea using 100% of Korean Jack beans (Sword bean)
- Liquid stick type
- It is packed on a stick for easy enjoyment.
- Add 1 stick to 2L of cool bottled water and you can eat delicious tea.
- You can have a variety of Americano, Latte and Apocato with water, milk or ice cream.
- 1 box, 360ml (30ml\*12)

NewDelhi

Business Center New Delhi



**Company Name :** Sun n Pine

**CEO :** Koh Changho

**Website :** www.sunnpine.com

**Address :** 201, 460 Iksandae-ro, Iksan-si,

Jeollabuk-do, Republic of Korea

**Email :** icarous@empas.com

**Phone :** +82 70-4067-5005

### Company Profile

Sun & Pine Co., Ltd. produces health food based on oriental medicine such as Korean ginseng drinks. It made by Oriental Phamarcy Dr. Ko Jang-Ho who is our company president. We have been systematic approaching with Tae-Kwang oriental clinic's secret since 1969. Reasonable price and the finest quality are our way to the top.



### MY Ginseng Vivace Special Package

Introduction to product (Specifications)

- It is a pouch form of Ginseng functional product that is easy to ingest and portable.
- Made of a finest grade ginseng and 6 herbal ingredients to support absorb ginseng easily.
- Anytime, Anyone, Enjoy!
- No Artificial ingredients and flavor.
- Pouch: 80\*140mm
- Individual Box: 90\*75\*153mm
- Premium Box: 230\*225\*95



### MY Ginseng

Introduction to product (Specifications)

- It is a pouch form of Ginseng functional product that is easy to ingest and portable.
- Made of a finest grade ginseng and 6 herbal ingredients to support absorb ginseng easily.
- Anytime, Anyone, Enjoy!
- No Artificial ingredients and flavor.
- Pouch: 80\*140mm
- Individual Box: 90\*75\*153mm



### Smart Ginseng

Introduction to product (Specifications)

- It is a pouch form of Ginseng functional product that is easy to ingest and portable.
- Made of a finest grade ginseng and 6 herbal ingredients to support absorb ginseng easily.
- Anytime, Anyone, Enjoy!
- No Artificial ingredients and flavor.
- 10ml pouch: 25\*135mm
- Individual pouch(20ea): 150\*200mm
- Box: 330\*230\*55



**Company Name :** Gelyo Co. Ltd.

**CEO :** Kim Hyeongbum

**Website :** <http://gelyo.modoo.at>

**Address :** 100 Gukgasikpum-ro Wanggung-myeon,  
ksan-si, jeollabuk -do, Republic of Korea, National Food  
Cluster Food Venture Center F246, 247

**Email :** -

**Phone :** 070-7778-7502

### Company Profile

We are a company that researches and develops premium gelato ice cream using agricultural products from various regions of Korea as raw materials.

Gelyo means "Gelato is Cooking" and the products are manufactured with the sincerity of employees together with the people of the world.



### Apple Gelato

Apple flavored gelato ice cream made using agricultural products from various regions of Korea as raw materials.



### Sword Bean Gelato

Sword Bean flavored gelato ice cream made using agricultural products from various regions of Korea as raw materials.



### Ginger Gelato

Ginger flavored gelato ice cream made using agricultural products from various regions of Korea as raw materials.



### Rice Gelato

Gelato ice cream made from rice and using agricultural products from various regions of Korea as raw materials.



### Sweet Potato Gelato

Sweet Potato gelato ice cream made using agricultural products from various regions of Korea as raw materials.



### Strawberry Gelato

Gelato ice cream made from natural strawberry and using agricultural products from various regions of Korea as raw materials.



### Persimmon Gelato

Persimmon fruit flavored gelato ice cream made using agricultural products from various regions of Korea as raw materials.



### Rose Gelato

Gelato ice cream made from rose and using agricultural products from various regions of Korea as raw materials.

# HONEST FOOD

**Company Name :** HONESTFOOD

**CEO :** Kim Su Seok

**Website :** www.honestfood.co.kr

**Address :** 59-11, Biseongnal-ro, Deokjin-gu, Jeonju-si, Jeollabuk-do, Korea

**Email :** yabul777@naver.com

**Phone :** +82-63-211-0757

## Company Profile

Since its foundation, HONESTFOOD Co., Ltd. have created through endless researches and developments a product with mobility, usability and comfortability which have not existed in the market. YABUL SERISE, the main product of HONESTFOOD Co., Ltd., does not require any fire or boiled water when you are having a food you want outside. There are also foods using pyretics as well as small carriable container. HONESTFOOD does not simply focus on selling consumables for hobbies, but provide value through quality foods in emergency situations such as natural disaster and promise that we will provide high quality products so that customers from allover the world can live a more convenient and safer lives.



## YABUL SERISE

**Introduction of product :**

Wherever and whenever pour cold water, it's OK in 10 minutes.

**Characteristics and strengths :**

In any situation, anytime anywhere, Cook with only cold water



## Red ginseng Extract

**Introduction of product (Specification) :**

- Ever since the inception of the company, the firm has continued to invest in the R&D of the heater to optimize it and make it more cost-efficient and convenient to users.
- The lower half of the container is a patent product that is unaffected by heat and therefore ecofriendly. Also, its durability is very solid as it preserves the heat released from the Heating pack and therefore multiplies the inside temperature.
- As the size of the outdoor market has increased by multiple folds yet there is no product on the market to represent for the outdoor cooking, our YABUL SERISE evidently is the competitive one that possesses convenience, portability, and biodegradability. Also, it has unlimited potential for the future that our company is undergoing research to combine it with other cooking tools to make it more user-friendly to consumers.
- Furthermore, areas where our heating products can be utilized is unrestricted that it could extend to areas of military procurement, emergency aid, baby products, and senior products. Its usage potential is indeed boundless that it could connect to any other areas in the market.



**Company Name :** YounginBio

**CEO :** Choi Injeong

**Website :** -

**Address :** 201, 10 Susong2-gil, Gunsan-si, Jeollabuk-do, Republic of Korea

**Email :** daisynim00@naver.com

**Phone :** +82 63-471-8947

### Company Profile

Youngin Bio was established in June 2018 and is a food company of 'fermented' technology products using local agricultural and fishery products (white rice barley, hamcho, and crab from the west coast). We manufacture and sell pickled food using West Coast crab and pet nutrition using white rice barley.

The main items in sales consist of three product lines: ""Chef's seafood,"" a pickled food with vinegar fermentation solution, ""Dr.+ Pat Pat,"" a pet nutrient using white rice barley and collagen fermentation, and tentatively named ""after a meal, an imposing figure"" a fermentation model for diabetic obese patients.



### Dr. Pat Pat

Dr. Pat Pat for CATS and Dr. Pat Pat for DOGS

We are not just pet food, but our own lactobacillus fermentation technique using premium method and prescription premium nutritional supplements and nutritional snacks using low molecular peptide collagen patents. It is a product that helps with obesity, diabetes, skin, maternal health, and eye health, which are side effects of indoor life by using its own patented method, and uses 100% human-grade raw materials.

- 1) This product builds the musculoskeletal system, enhances digestive functions, and restores the health of old and inactive pets by helping them recover from illness.
- 2) This premium supplement is a combination of biotechnology and herbal medicine.
- 3) Low-fat, high-protein supplement that turns collagen into low-molecular peptide using environment-friendly BIO patented fermentation technique for fast absorption
- 4) Helps prevent eye diseases and joint problems caused by advanced age
- 5) Contains fiber to enhance the bowel movement of pets confined indoors
- 6) Fortified protein, calcium, and iron for fast recovery from surgery

- ZERO additives -Safe food for your dear pet!
- Prescribed supplement to ensure the healthy life of cats and dogs.



### Chef Choi In-seon's Soy Sauce Marinated Crab

- Focusing on the health care of non-preservative, non-adhesive, and non-artificial additives
- A recipe from a famous chef
- A low-salt diet that is simple and healthy
- 100% domestic raw material and crabs
- Soy sauce based, 250g, 9\*6.5\*6.5cm



### Chef Choi In-seon's Spicy Marinated Crab

- Focusing on the health care of non-preservative, non-adhesive, and non-artificial additives
- A recipe from a famous chef
- A low-salt diet that is simple and healthy
- 100% domestic raw material and crabs
- Spice flavor based, 250g, 9\*6.5\*6.5cm



**Company Name :** Sungwon PCM

**CEO :** Lee Jeamin

**Website :** www.heblis.com

**Address :** Room 103, Jeollabuk-do Small Business Incubating Center, 945-6, Girin-daero, Deokjin-gu, Jeonju-si, Jeollabuk-do, Republic of Korea

**Email :** heblis5599@naver.com

**Phone :** +82 2-780-0149

### Company Profile

Sungwon PCM is a health functional food company that makes products that are effective at economical prices by confirming scientific evidence, using excellent raw materials, and reducing distribution stages.

We want to create products that can be prevented and managed before a disease occurs, and can even be expected to improve symptoms, products that can be consumed with confidence without side effects, and products that can help the human body based on raw materials derived from nature.



### Heblis Goodnight

People dealing with hard work and stress need good sleep. Just take 2 tablets of Heblis Good-night 1 hour before going to bed for deep sleep and vitality the next day.

Heblis Good-night contains healthy ingredients taken from nature such as theanine, which promotes psychological stability and relieves stress, magnesium components necessary for maintaining nervous system and muscle function, fermented barley extract, and valerian extract.



### Heblis Platycodin

Because of an extremely limited annual harvest, only 0.1% of Koreans are able to experience 3-year-old white balloon flower root from Jeju Island, an invaluable ingredient.

Heblis Platycodin, which contains ground whole white balloon flower root grown on pristine Jeju Island for 3 years by Korea's leading agricultural specialist, Kisung Lee, boasts ingredients that are superior to other balloon flower root products.



**Company Name :** Humanpia Costech Co., Ltd.

**CEO :** KIM YANG SOO

**Website :** <http://en.hmpia.kr>

**Address :** 13-9, Geobukbawi-ro 1-gil, Jinan-eup,  
Jinan-gun, Jeollabuk-do, Korea

**Email :** humanpia0@hanmail.net

**Phone :** +82.63-211-5050, +82. 70-8280-7040

### Company Profile

Humanpia Costech Co., Ltd. was established with the motto of creating beauty. Since it was established in 2009, Humanpia Costech Co., Ltd. aiming a medium enterprise has developed items of facial mask pack and cosmetics for human body with our own brand after starting production of Fucoidan facial mask pack of Samdawon Co., Ltd. as OEM basis and BEAUTIPLEX facial mask pack of LG Household & Health Care.



### LUS hyaluronate premium serum

Introduction to product (Specifications)

LUS Hyaluronic Acid Serum (brightening & anti-wrinkle functional cosmetics)  
Hyaluronic Acid is a polysaccharide combined with Amino-acid and uronic-acid.

It is used as one of the best ingredients for cosmetics in that it protects our body from penetrations of germs or any toxic materials, let alone absorbs water as much as 1000 times of its weight. successfully helps your skin look younger and brighter.



### LUS DERMACAL RECOVERY CREAM

Introduction to product (Specifications)

The LUS Dermalcal recovery cream contains high-functional plant-calus stem cell culture extracts, which promote skin cell regeneration to the younger skin through various fine substances and pollution. Also, Adenosine with excellent whitening function and Niacinamide with improved wrinkles increase moisture and moisturizing power.

Jasmine petals extract, rose extract, freesia extract, aloe vera leaves extract, green tea extract, chamaecyparis Obtusa Leaf Extract, and eucalyptus extract from nature keep the skin fresh and moist. Lovely choice for your skin health, The LUS Dermalcal recovery cream.



### LUS mask packs

Introduction to product (Specifications)

LUS Mask Sheet They are rich in minerals, vitamins, as well as all kinds of extracts that smoothen the skin and boost its firmness. The 24g essence is excellent for moisturizing and keeps your skin firm after use

# Hisol

COSMETICS

**Company Name :** Hisol Co., Ltd.

**CEO :** Park E Gyeong

**Website :** www.lymphodia.com

**Address :** 247-9, baraebong-gil, Unbong-eup,  
Namwon-si, Jeollabuk-do, Korea

**Email :** hisol24@naver.com

**Phone :** +82-62-351-2822

## Company Profile

HISOL Company is located at the Herb Industrial Zone (altitude: 600m) of Namwon, where the vital force of Baraebong of Jirisan, the national park and best mountain of Korea, is harbored. The company manufactures cosmetics, body care products and quasi drugs using the native herbs of Jirisan and accepts production under OEM and ODM basis. HISOL Company Limited is a certified eco-friendly enterprise equipped with the technology of manufacturing the products that can provide customers with the experiences of true herb therapy. Also, the company has its own herb oil extractor, differentiating from other manufacturers, through which herb oil and hydrozole are extracted directly inside the factory to be used for cosmetics. The company is making every effort to make cosmetics containing nature as it is.



### Bio Revital Skin Toner

**Product description**

: functional cosmetics for whitening and wrinkle improvement

**Main ingredients**

: citron extract, marine collagen, zanthoxylum planispinum fruit extract, pasqueflower extract, usnea barbata extract, gardenia seed extract, rosemary leaf extract, citron seed oil, lavender water

**Efficacies**

: keep skin environment healthy by adjusting the oil and water balance and pH level of skin.

**Instruction**

: Use the product after facial wash. Soak adequate volume in cosmetic cotton and apply softly from the inside to the outside following skin texture in a wiping motion and tap for absorption.



### Bio Revital Essence

**Product description**

: functional cosmetics for whitening and wrinkle improvement

**Main ingredients**

: corni extract, citrus extract, oenothera biennis extract, parthenocissus tricuspidata extract, safflower seed oil, rosemary leaf water, citrus seed oil, lavender water

**Efficacies**

: Fresh herb extracts of evening primrose, ivy and rosemary and citrus seed oil and marine collagen extend the moisture-retaining time and provide boosting function for facial line care.

**Instruction**

: Use the product after applying toner. Apply the product in the order of cheeks, forehead, chin and neck. Spread up and down cheeks neck and axillary fossa using the index finger, middle finger and ring finger together. Apply from the middle of chin towards risorius muscles at both ends of mouth.



### Bio Revital Skin Toner

**Product description**

: functional cosmetics for whitening and wrinkle improvement

**Main ingredients**

: citrus extract, marine collagen, centella asiatica extract, licorice extract, green tea extract, scutellaria radix extract, rosemary leaf extract, lavender water

**Efficacies**

: Help provide nourishment, wrinkle improvement and whitening effect as well as keeping skin vital and moisturized by forming a smooth moisture layer. Also, the product provides long-lasting effect by controlling moisture level inside the skin.

**Instruction**

: Apply the product at the final step of skin care. Take adequate volume and spread on face and neck and get the content absorbed. texture in a wiping motion and tap for absorption.





**Company Name :** GOES

**CEO :** Gang Cheng

**Website :** www.ggoes.co.kr

**Address :** 14-4, Iksan-daero 30-gil, Iksan-si,

Jeollabuk-do, Republic of Korea

**Email :** kim7703@hanmail.net

**Phone :** +82 63-843-4488

### Company Profile

GOES company is the manufacturer and seller of comfortable and practical children home and easy wear clothing aged from 1-12 years old.

The company has good sales records domestically and has business partners in Japan, Vietnam and China. As our brand product is essential clothing for children we pay deep attention and care to make safe, comfy and eye-catching designs.

Thousands of happy children in Olomimi brand products is our best reward. In our clothing children spent lots of time during sleep and home activities that is why our originally made in Korea brand must sustain only high standards of quality and safety.



### Children's Cotton Homewear, Sleepwear and Underwear

#### SUMMARY

- Comfy and soft children clothing and underwear made of natural pure cotton under strict Korean safety and quality control. Eye-catching designs, non-fluorescent clothing for sensitive children's skin.

#### FEATURES.

- Soft and breathable short-, 3/4th- and long-sleeve designs are ideal for Spring/Summer seasons. Thoroughly selected jacquard and slub fabrics are comfy and practical, designed for the child's sweet dreams and daily indoor/outdoor activities. Easy and comfy wear for your lovely child.

- Various designs of Fall/Winter for daily home activities and sweet dreams. 30S napping span is made of soft and stretchy cotton fabric with napped lining. Comfy, warm and practical this clothing set can be put on at home or as long-sleeve t-shirt and leggings to go out. Ultra soft napped lining cares sensitive child's skin, keeping it safe and warm. 20S/30S rib cotton designs are warm and practical for home and sleep.

- Soft and natural underwear designs with care about sensitive children's skin. Colorful and eye-catching designs along with hypoallergenic fabric allows children wearing with safely and joyfully.

#### SPECIFICATION & FUNCTION

- Duly certified product: ISO9001; ISO14001; KC safety mark;

KATRI non-fluorescent certificate and test.

- High Korean standards of quality and safety, expert workmanship



**Company Name :** OneAsiaCompany

**CEO :** Lee Dongwon

**Website :** <http://eng.oneasiacompany.com>

**Address :** 303, Cheonjam-ro, Wansan-gu, Jeonju-si, Jeollabuk-do, Republic of Korea

**Email :** oneasiacompany@naver.com

**Phone :** +82 70-8616-4199

### Company Profile

At OneAsiaCompany, we develop healthy beauty products for all as the first great step of an internationally recognized 100-year corporate project. OneAsiaCompany has developed cosmeceutical products which combine lactic acid culture technology with medical procedures that normalize damaged tissue. Through 6 kinds of beneficial lactic acid bacteria, we will help you get back bright, healthy skin with no complications. Made from healthy ingredients and nature-friendly oriental medicine, our products are safe for use by pregnant women and young children. 'Beauty for All' is the first and the only objective of OneAsiaCompany. We realize beauty for everyone by conducting continuous research and development with a variety of complementary brand portfolio.



### Zero Complex A.C Mask Pack

6 types of lactic acid bacteria, including Lactobacillus Plantarum and Lactobacillus Rhamnosus, act on the skin to give clean and baby soft skin. Researched and developed by a research team made up of dermatologists, oriental medicine specialists, and Chinese medicine professors, ZERO COMPLEX A.C MASK PACK is a healthy, nature-friendly product, and the essence of accumulated technology.

- Mildly acidic daily care with a pH5.5 for healthy skin.
- Gives clean and clear skin by removing excess sebum in pores.
- Eliminates keratin build-up and other triggers of skin inflammation.
- Overnight fast relief.



### Zero Complex Foot Pack

Made from 99.9% natural ingredients, clean and pure foot extract contains natural substances that do not harm the human body and the environment. The waterproof cover makes it possible to walk but as much as possible, do not use it while moving about. The keratin layer becomes thinner with time. Do not wash feet with water after removing the foot pack. Let them dry naturally.

- Keratin care moisturizing removes foot odor.
- Healthy natural ingredients.
- Good lactic acid bacteria and oriental medicine.
- Easy to use.

# DEQUA°

**Company Name :** Dequa

**CEO :** Kim Yoongi

**Website :** www.dequa.co.kr

**Address :** Office 114, 945-6 Girin-daero,  
Dongsan-dong, Deokjin-gu, Jeonju, Jeollabuk-do,  
South Korea

**Email :** dequa@naver.com

**Phone :** +82 63-212-9645

## Company Profile

DEQUA values the coexistence of nature and human beings, research and development, and humanism as the values of the company. Through this, we are researching and developing anti mosquito LED lamp, water treatment, shade, etc. and supply to humanity.

Dequa is trying to make a company which is to coexist with people, nature, and technology together. The importance of waste as the top priority of corporate management. We are pursuing a steady work in the field of environment based on high quality products such as anti mosquito lamp, water treatment systems.

All employees in Dequa company will continue to make clean, stable water resources and eco friendly solar power through bold changes, challenges and new technology development. We aim to give eco-friendly future to the customers. Dequa is investing and developing to create better value through humanism as the future is uncertain.



## Mosquito Repellent LED Lamp

1. Mosquito Repellent using human harmless LED wavelength
2. Noiseless, Odorless, UV products, eco friendly
3. Specific light wavelength that apply only to mosquitoes.
4. Secure photobiological stability
5. Demonstration test on mosquitoes completed
6. Harmless to human body

### Features

1. USB type: DC5v
2. Socket type: base26, 220v, 50-60Hz

### Specifications

- EN35: USB type effective range of 2m, 3.5w  
EN56: USB type effective range of 6m, 5.6w  
EN85: 220v, effective range of 10m, 8.5w



## Window Insulation Film

Insulating sheet for window that regulates the temperature and blocks UV

### Features

1. 97.6% UV Protection
2. Thermal shutdown
3. Heavy metals not detected
4. Attach to glass window only with spray
5. Desorption is easy (non-adhesive)

# YENA

**Company Name :** YENA Co., Ltd

**CEO :** Bae Myeong su

**Website :** www.yenacos.com

**Address :** (Advanced Science Industrial Complex)

1501-4, Sinjeongdong, Jeongeup-si, Jeollabuk-do, Korea

**Email :** iamnamkyung@naver.com

**Phone :** +82-63-853-0070

## Company Profile

By combining uncommon vital natural energy with the skin science technology of only YENA, we aim to bring fresh and beautiful skin to the fatigued skin of modern people.



### Stem Cell Spicule Program

#### Introduction to product (Specification)

: Strong skin regeneration, Collagen production, Improvement of inflammation, Brightening : Program for experts

#### Feature and strength etc.

: Spicule give an active ingredient into the skin by passing the epidermis of skin and reaching the stratum basale of skin. It regenerates cells and improves inflammation because it helps skin to absorb a marine plant stem cell, niacinamide, allantoin and various fruit extracts that have excellent skin regeneration, antioxidant, brightening, anti-aging effect. In addition, it strengthens the synthesis of collagen and elastin to improve skin elasticity to smooth and youthful.



### Bio EX Set

#### Introduction to product (Specification)

: Regeneration, Skin trouble improvement, Pore and Keratin improvement, Soothing : Self program at home

#### Feature and strength etc.

: Bio EX Set is a daily product that provides marine plant stem cell, peptide and centella asiatica extract etc., into the skin deeply due to excellent function of spicule to make rough skin clear and moist. After care of expert with our Stem Cell Spicule Program, it helps you to care skin by yourself at home. Also it is product that modern man who can't visit spa can care skin at home easily and quickly.



### Returning Dr Eye Patch

#### Introduction to product (Specification)

: Strong regeneration, Elasticity enhancement, Reduce fine wrinkles, Eye line improvement, Reduce dark circle

#### Feature and strength etc.

: It is a Spicule Program Set for thin and delicate skin around the eyes.  
: It quickly restore the skin around the eyes with an active ingredient cream of spicule and marine plant cell etc and collagen functional eye patch.



**Company Name :** Airlab Co.,Ltd.

**CEO :** Lee Hyo Kwang

**Website :** airlab.kr

**Address :** #212, Jeonju University 2nd floor, 303,  
Cheonjam-ro, Wansan-gu, Jeonju-si, Jeollabuk-do, Korea

**Email :** airlab1@hanmail.net

**Phone :** +82-63-236-5840

### Company Profile

This product is designed to increase the anti-bacterial effect inside the nose and to prevent respiratory diseases by filtering and collecting harmful matter such as yellow sand, fine dust, pollen and pollutants contained in the air when breathing in air through the nose after inserting the product inside the nose. This reusable nose mask consists of a 3-step structure equipped with a disposable natural filter that sustains excellent filtering performance and is both sanitary and economical.



### Comfortable to wear nose mask

#### Product Features :

This product is designed to increase the anti-bacterial effect inside the nose and to prevent respiratory diseases by filtering and collecting harmful matter such as yellow sand, fine dust, pollen and pollutants contained in the air when breathing in air through the nose after inserting the product inside the nose. This reusable nose mask consists of a 3-step structure equipped with a disposable natural filter that sustains excellent filtering performance and is both sanitary and economical

#### Effects & functions :

- Nose filter mask made in the 3-step assembly style.
- Environmentally-friendly filter made of natural mulberry paper and cotton.
- Sanitary product with replaceable disposal mulberry paper filter.
- Comfortable wear and minimized exposure due to use of transparent thin silicon.
- Improved bacterial purification function inside the nose with phytoncide added to the filter.
- Refillable product with replaceable filter and reusable silicon tube.
- Customized product (large, medium, small) worn according to volume of the nostrils.
- Breathable only through the filter as the silicon tube closely adheres to the nasal cavity.
- Fine fibers of the mulberry paper filter and humidity generated by the dual tube (silicon) upon breathing effectively block out fine dust.
- PM 2.5 or lower, 58.3%~69.1% blocking effect according to the results of fine dust collection



**Company Name :** AR&G Co., Ltd.

**CEO :** Byun Moon Sung

**Website :** www.arng.co.kr

**Address :** 80 Junghwasan-ro, Wansan-gu, Jeonju-si,  
Jeollabuk-do, Korea

**Email :** arng5144@naver.com

**Phone :** +82-63-224-5144

### Company Profile

We intend to give positive challenge based on infinite creativity and endeavor to attain the enterprise spirit for joint prosperity of mankind and society. Also, under the management philosophy of "respect for mankind" and "satisfaction of customers," we are doing our best to take part in the health, beauty, and happy life of our customers. After its establishment in 2006, AR&G Co., Ltd., has performed ceaseless research for the beauty of our customers. After years of research, Juicibel containing various plant ingredients and highly functional herbal cosmetics "Danilhong" were launched, and in 2013, "To Be A Lady," which is eco-friendly, was born. As a result, we are become a global brand through the export to many countries worldwide such as the US, China, Brazil, India, Pakistan, the Philippines, etc. AR&G promises to continue to do research and develop products to become a company loved by all of our customers.



### JUSIBEL Silicon Brush Sleeping Pack

#### Product description :

- Patent registration no. 10-1237448 - It has an advantage that silicone brush makes it possible to apply a pack comfortably before sleeping. It prevents the contents from being wasted by providing them to the brush immediately and also is hygienic and convenient by not using the hand.

#### Features and advantages :

- It protects the silicon brush from pollutants by using the exclusive cover, providing a more hygienic, convenient cosmetic product.  
- Containing E.G.F(Epidermal Growth Factor) 10ppm - Anti-oxidative effect of aronia and astaxanthin - Skin transparency effect of galactomices

### To be a lady Mini Pack

#### Product description :

To be lady's mini pack 6set is very portable anywhere and easy to carry everywhere for everyone. There are Sun cream, Pimple eraser, BB cream, Prime Primer, Eyelift Cream, Whitening Essence. - Common point : Approved by the Korea Food and Drug Administration (KFDA) as a triple functional cosmetic with anti-wrinkle, whitening, and UV-blocking effects, it is characterized by a portable and convenient pouch-type container with a hard lid that dusts or pollutants don't get into despite frequent use, which is hygienic and easy to carry anytime, anywhere. It is suitable for carrying or travelling because the contents don't flow out or are not polluted.



### To be a lady Mini Pack

#### Product description :

- covered blemishes, while brightly skin whitening, elasticity, moisturizing, prepares the brighter complexion. UV protection and lifting up one at a time makes perfect BB, CC, DD cream.  
- make more white and more beautiful skin by included Galactomices and peptide.





**Company Name :** NJ Company

**CEO :** Joo Namjin

**Website :** www.fountainmall.co.kr

**Address :** 26, Doam-gil, Seongsan-myeon,  
Gunsan-si, Jeonbuk, Republic of Korea

**Email :** njjoo@njcompany.co.kr

**Phone :** +82 70-4149-3488

### Company Profile

NJ Company was established in 2009 and is currently located in Gunsan, Jeollabuk-do. They manufacture food additive sterilizer, deodorant, and disinfectant. Some of their main products are New Fountain Maxx (sterilizing agent), Fountain Maxx Food (peroxide antiseptic) and Fountain Terra (CIP cleaning agent).



### New Fountain Maxx

#### Product Features :

This product is a powerful disinfectant and cleaner made of alkaline ionized water of pH 12.5 produced by ion-exchange of purified water (conductivity: 5-15ms) from natural mineral water (conductivity: 150-200ms). This pure alkaline water contains no harmful chemicals such as surfactants and alcoholic impurities, which makes it completely safe for human use. Its eco-friendly ingredients including Ixeris Polycephala extract and garlic extract help provide an extra safety guarantee for use on food additives and equipment.

- A powerful, antibacterial effect with pH12.5 ionized alkaline water.
- Killing germs in just 30 secs (Other products take 3 hrs or longer).
- Eco-friendly, colorless, odorless and anti-pollution (no chemicals such as surfactants and alcohol).
- Proved harmless to humans in all tests conducted for dermal and oral mucosa irritation, oral toxicity, cytotoxicity and mutation.
- Pure alkaline ionized water working as a powerful cleanser.



**Company Name :** Saebomkorea  
**CEO :** Song Heeyong  
**Website :** <https://www.saebomkorea.com>  
**Address :** 12-7, Wonsingum 2-gil, Samnye-eup,  
 Wanju-gun, Jeollabuk-do, Republic of Korea  
**Email :** saebomyu@hanmail.net  
**Phone :** +82 63-903-3397

### Company Profile

Saebomkorea manufactures cosmetics, handmade soap, red ginseng relax gel, and mask packs.



### Natural Handmade Soap (9 types)

This product is eco-friendly made with natural materials, not synthetic chemicals. The primary ingredients of natural soap are usually herbal or eco-friendly, and there is no irritation when used for allergies or sensitive skin. 100g



### Red Ginseng Relax Gel

This gel-type product absorbs quickly without any stickiness as soon as you apply it with a cooling sensation. It helps relax the muscles and relieve stress. 100ml.



### Lettobom Mask Pack (3 types)

- Pomegranate (23ml): A lifting/radiance mask sheet containing pomegranate extract rich in vitamins B1 and B2 and minerals to improve resilience, and provide moisturized radiance to the skin.
  - Green Tea (23ml): The mask sheet drenched in a clear serum with Green Tea soothes skin irritated by environmental stressors, refreshing and revitalizing it.
- Formula is without added parabens.
- Honey (23ml): Get radiant and illuminated skin in an instant with this Honey Face Mask. The honey extract, with its nourishing properties, reveals younger looking, invigorated skin. Contains one single-use face mask.





**Company Name :** Home Edition Myungjin

**CEO :** Heo Kyung

**Website :** www.myung-jin.co.kr

**Address :** 237, Chucheon-ro, Deokjin-gu, Jeonju-si, Jeollabuk-do, Korea

**Email :** myungjincoltd@naver.com

**Phone :** +82-63-211-4652~3

### Company Profile

World's Myungjin Rubber Gloves (Of the hand, By the hand, For the hand) Since foundation in 1975, Myungjin has committed to resource and develop kitchen goods for customer's comfort and clean kitchen environment. Myungjin has been growing into a global firm with a solid presence in overseas markets, too. We launched hook type rubber glove for the first time in the world to help customers kitchen work with more comfort and satisfaction. Myungjin'also produce industrial rubber gloves, agricultural protective boots(water boots) aimed at protecting hands and feet from risk. We are supplying disposable gloves and bags and also supplying industrial gloves such as latex coating gloves and PU coating gloves. Myungjin cares about customers' health as testified in its use of eco-friendly materials only in order to protect the environment. Myungjin is putting priority on producing top quality products and developing products of broad range based on experience and know-how built over many years. Myungjin does not let little details go unnoticed to clear of any small customer complaint, Myungjin promises to do our best as your reliable partner.



### Myung Jin Hanger-type Rubber Gloves

**Material :** Top-class natural latex

**Design & function :**

- Gloves with long sleeves / Grid pattern applied on the palm & finger areas to prevent slipping
- Red clay & charcoal added : Anti-bacterial effects with low stimulation on the skin / Protects the skin outstandingly
- Hook attached to the rubber gloves: Easy to store and dry
- Color : Pink, Red, Ivory - Rubber gloves with a patent



### Myung Jin Protective Industrial Gloves

**Material :** Top-class natural latex

**Design & function :**

- Embossing applied on the palm & finger areas to prevent roll-down and slipping
- Protective gloves widely used in the fields of agriculture, fishery, forestry, industry, etc
- Color : Black, yellow



### Myung Jin Clean Gloves

**Material :** LDPE

- Convenient when cooking foods

By using materials approved by the FDA, safety is guaranteed. Created ergonomically, the size and design of the gloves fit the hands perfectly.

**STONE  
LEE**  
KOREA-1985

**Company Name :** Youngshin Stone Co., Ltd

**CEO :** Lee Jae Hyun

**Website :** www.stonelee.com

**Address :** 107-32, Jeseoksaji-ro, Kumma, Iksan,  
Jeollabuk-do, Korea

**Email :** master@stonelee.com

**Phone :** +82-63-834-3219

### Company Profile

Youngshin Stone Co. Ltd makes the products of amphiboles, a good rock for human health. The amphiboles produced only in Korea which can't be found in any other place in the world have the high credit of gemlike stones that emit wavelength of far-infrared radiation up to maximum 93%. The amphibole kitchen utensils have been shaped only by physically processing the pure raw rocks without any chemical processing, and have been used as good cookwares for human health in special restaurants or homes in Korea for generations to generations. The executives and staff members of Youngshin Stone Co. Ltd will make a ceaseless research in order to open a new chapter of new cookware culture with these blessed Jangsoo amphiboles for enabling everybody in this world to enjoy the best taste.



#### Stone Bowl YS-0116A

##### Introduction to product (Specification) :

- Bibimbap a bowl that is symbolic of Korean food
- Natural stoneware made out of a natural rock
- Well-being kitchenware abreast of today's demands, without chemical processes
- Keeping the food taste as the way it is, with much of far infrared ray
- Economical and excellent in holding heat as a result of high heat ratio
- Enhanced finishes through highly systemized manufacturing processes and standardization - Stable and efficient production equipment allowing enough capacity as well as on-time delivery service



#### Anti-boilover Stone pot YS-0216A-1

##### Introduction to product (Specification) :

- Suitable to cooking scorched rice and nutritious rice with this stone pot
- Natural stoneware made out of a natural rock
- Well-being kitchenware abreast of today's demands, without chemical processes
- Keeping the food taste as the way it is, with much of far infrared ray
- Economical and excellent in holding heat as a result of high heat ratio
- Enhanced finishes through highly systemized manufacturing processes and standardization - Stable and efficient production equipment allowing enough capacity as well as on-time delivery service



#### Steak&Pizza Pan YS-0826B

##### Introduction to product (Specification) :

- Suitable to baking pizza and cooking steaks



**Company Name :** NOSTALGIA

**CEO :** Kim Yongchul

**Website :** <http://nostalgia.tradekorea.com>

**Address :** 55801 43, Simyo-gil, Namwon-si, Jeollabuk-do, Republic of Korea

**Email :** kycheol@gmail.com

**Phone :** +82 70-7631-8363

### Company Profile

Nostalgia manufactures pure cosmetic with natural materials. Our products are safe since vegetable oil has been used for the main materials being used for a natural cleanser and the oil's property and efficacy compatible with a purpose was respectively applied by products. We made it a rule not to use chemical additives such as synthetic surfactant (plant-originated, vegetable, natural surfactant etc.), preservatives, silicon etc. Natural cosmetics minimized a skin stimulation element because preservatives controversial to harmfulness and chemical additives beyond necessity have not been used. Nostalgia products provide a customer only with a natural cleanser and natural cosmetic which give help to skin and scalp health and improve on trouble rather than simple use feel and feel after use.



### Facial Bubble Cleanser

- Facial Bubble Cleanser
- A natural cleanser only for face washing that used natural oil and fat
  - As a natural cleanser in use of extra virgin olive oil, coconut oil, brown rice oil, argan oil, it is safe and is of help to clean face washing and skin health.
  - Chemical additives such as synthetic surfactant (plant-originated surfactant, vegetable surfactant etc.), preservatives, coloring matter etc., have not been used.
  - Options: Lemon Lime, Raspberry, Chamomile, Saffron



### Whitening & Wrinkle Repair Dual Functional Skincare

- It gives help to skin moisturization and health since argan oil, rosehips oil, jojoba oil, evening primrose oil, etc, have been used.
- Preservatives controversial to harmfulness were not used and chemical additives were minimized.
- Effective ingredients and extracts that give help to skin health have been added to the full.
- Toner, lotion, essence, cream



### Whitening & Wrinkle Repair Dual Functional Mask Pack

- Cleansing Zone Herbal extracts grown in Jiri Mountain and natural essence that helps skin's health.
- It moisturizes and nourishes the skin to improve skin and health.
- Mask Pack OEM/ODM

# ONESKIN

Origins in Nature

**Company Name :** OneSkin Cosmetics

**CEO :** Kim Gyeonghee

**Website :** www.oneskin.co.kr

**Address :** 43 Simyo-gil, Namwon-si, Jeollabuk-do,  
Republic of Korea

**Email :** one030@oneskin.co.kr

**Phone :** +82 63-633-7220

## Company Profile

With 50 years of manufacturing technology and state-of-the-art cosmetics CGMP manufacturing facilities, ONESKIN COSMETICS will be a strong partner for you as you prepare to grow into a global brand with a good raw materials and safe products.



### White Lie, Lily white Skin Cream

#### 1.SUMMARY

It is a white cream for whitening the skin. Work as moisturizing on all types of skin dry, oily, flabby and aging skin to make the skin clean and bright.

#### 2.FEATURES

- It is very effective for people wanting whitening with a soft feeling.
- It gives shiny, whitening, moisturizing, and taut feeling to dry skin at the same time.
- It is a whitening cream immediately to make clean and bright skin.
- Contains 10 certified organic extracts from USDA and is also effective for whitening and wrinkle removal.
- Can be used on all skin, aging skin and flabby skin, and also helps to treat blemish and sensitive skin.
- Contains EGF extract to excel in cell barrier and helps skin elasticity and upper skin.

#### 3.SPECIFICATION & FUNCTION

##### - How to use:

- (1) Use the product at the last stage of base make-up every morning.
- (2) Scoop a moderate amount of the product with the cream applicator spatula onto your face and gently tap with your finger to make sure it gets absorbed.
- (3) As the whitening level depends on how much of the product is applied, control the quantity in accordance with the desired style.



### Edge Cutimal Face Mask

#### 1.SUMMARY

It is an interesting skincare facial mask made with only gentle and non-irritating ingredients.

#### 2.FEATURES

- Organic combination of licorice, root rhodiola rosea L, damask rose, dandelion leaf and olive leaf extracts contain nutrients that regulate the sensitive skin to make the skin smooth and fresh.
- A hypoallergenic mask pack that removes all of the ingredients that cause skin troubles so you can use it safely on sensitive skin.
- Animal Mask Pack Printing is safe to use without any problem with food color that can be relieved even if you eat it.

#### 3. OPTIONS

Cat Whitening Mask, Sheep Aqua Mask, Tiger Anti-wrinkle mask, Pig collagen mask, Panda nutriment mask, Duck soothing mask



### Roroko Layering 4pc Eyeshadow

#### 1. SUMMARY

With simple four multi types, you can apply various colors and sparkles gently to make your eyes look natural.

#### 2. FEATURES

Natural, Multi Color, sparkling  
Smooth fine particle with no entrapment at all.  
You can use easily in your own style.

#### 3. OPTIONS

#01 Coral, #02 Pink, #03 Nude, #04 Muse





**Company Name :** JUHYUN

**CEO :** Bea Jeonghee

**Website :** <http://www.jhtr.co.kr/>

**Address :** 119, Wanjusandan 3-ro, Bongdong-eup,  
Wanju-gun, Jeollabuk-do Korea

**Email :** pokrein@gmail.com

**Phone :** 063-251-1564

### Company Profile

Juhyun Co., LTD. is a smaller and medium-sized company that specializes in the production of Excavation Attachment, and developed Tilt Rotator for the sixth time in the world and the second in Asia and Korea. Holds. Juhyun is conducting research projects with the Korea Construction Equipment Technology Institute, Korea Institute of Industrial Technology, and Korea Institute of Construction Technology parts. In the field of Tilt Rotator, in order to become No.1 in Asia, we exchange technology with national research institutes in universities and construction fields. In order to enter the world construction Market, European standard Tilt Rotator is also developing technology. We are planning to participate in the BAUMA exhibition at the world-class construction equipment exhibition.



#### Tiltrotator

**Model:** TR-60 (12ton~16ton Excavation)  
Infinite 360 degree with bucket tilt up to 45 degrees with Excavator fixed. Attachment that can work while rotating repeatedly (Particularly used for complex urban subway construction, water and sewage construction, gas construction, district heating construction, road repair construction, apartment construction site. etc.)



#### Tiltrotator

**Model:** TR-30 (14on~6ton Excavation)  
Infinite 360 degree with bucket tilt up to 45 degrees with Excavator fixed. Attachment that can work while rotating repeatedly (Particularly used for complex urban subway construction, water and sewage construction, gas construction, district heating construction, road repair construction, apartment construction site. etc.)



#### Sweep

Urban road construction site, subway construction site, water and sewage construction site, Used for district heating construction site, reconstruction work site, etc.



**Company Name :** Byuck Jin

**CEO :** Beak Seunghak

**Website :** www.bjsteel.kr

**Address :** 146-25 Gunsansandan-ro, Gunsan-si,  
Jeollabuk-do, Republic of Korea

**Email :** mk3805@bjsteel.kr

**Phone :** +82 63-731-1010

### Company Profile

Since establishment is 1974, Byuck Jin Co., Ltd has been in the field of precision machining for over 40 years, accumulating many achievements and experiences. Based on this, a foundry factory was established in Thai Nguyen, Vietnam in 2012, from casting materials to precision machining. They have grown into a company that can improve customer value by establishing a system that can produce in batches. As a specialized company in the field of casting materials and precision processing, Byuck Jin will continue to have international competitiveness in the 21st century.



**Hi-Cr Double Tube**

Concrete pumping vehicle transfer pipe, 6-inch



**Hi-Cr Flap Elbow**

Concrete pumping vehicle transfer pipe



**Swing Valve**

Concrete pumping vehicle transfer pipe connecting parts



Company Name : Giheung Industry Co.

CEO : Jeong Soonmo

Website : [www.ghisky.com](http://www.ghisky.com)

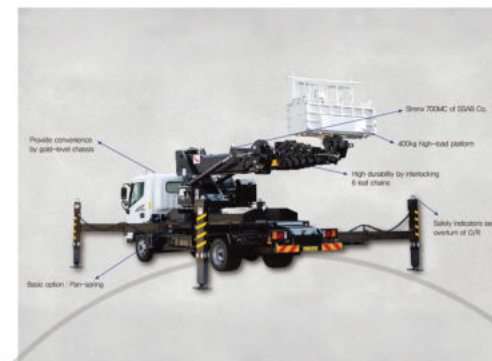
Address : 142, Seogam-ro 3-gil, Iksan-si,  
Jeollabuk-do, Korea

Email : [widejsm@naver.com](mailto:widejsm@naver.com)

Phone : +82 63-833-2468

### Company Profile

Our GiHeung High place operation car is proud of its high cost-effectiveness on equal work in its category, reflecting value change of our customers. We will consistently strive to develop the technology and user-oriented equipment



#### GH-2906A

29M (440Kg)  
Giheung Industry's best-selling car



#### GH-4607A

46M (550Kg)  
Initial 550Kg certification



**Company Name :** Puremem Co., Ltd.

**CEO :** Jeong Yeonseok

**Website :** -

**Address :** 67 Sandanoryong-gil, Samgi-myeon,

Iksan-si, Jeollabuk-do, Republic of Korea

**Email :** woosm1012@naver.com

**Phone :** +82 31-366-4854

### Company Profile

Puremem is providing top quality Hollow fibre UF membrane filters for water purifiers and water coolers (mainly as components of stand, countertop & under-sink type purifiers).



#### PM 1002-2

It is a Ultrafiltration (UF) hollow fibre membrane for water purifier filter.

- General type
- Material : ABS(case), Polysulfone(membrane)
- Size : 174mm(length) ,47.5mm(φ)
- Effective area :0.45m<sup>2</sup>



#### PM 1005-2

It is a Ultrafiltration (UF) hollow fibre membrane for water purifier filter.

- General type
- Material : ABS(case), Polysulfone(membrane)
- Size : 128mm(length) ,44mm(φ)
- Effective area : 0.267m<sup>2</sup>



#### PM 2002

It is a Ultrafiltration (UF) hollow fibre membrane for water purifier filter.

- Mini type
- Material : ABS(case), Polysulfone(membrane)
- Size : 70mm(length) ,36.5mm(φ)
- Effective area : 0.204m<sup>2</sup>





**Company Name :** POONGCHANG

**CEO :** Kim Jeongbum

**Website :** www.dustfilter.co.kr

**Address :** -

**Email :** babaj@naver.com

**Phone :** 82-63-833-7774

### Company Profile

Poongchang cares for the people around the world who have become more aware about their health and are fighting a tough fight in the ongoing crisis. This company develops products whose dust prevention rate is 63%, wind airworthiness is 60%, fire is not burnt and the products are completely eco-friendly without toxic gas



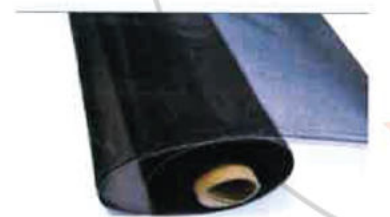
### 130 Mesh Nano Dust Proof Net

Keeping the air fresh is very important. Once the window of the room is closed, the room and air might be filled with hazardous materials. Poongchang takes care of this concern and manufactured the dust proof scree. By using mono filament, the life of this product will increase by 20 years. This is an eco-friendly product that provides clear view and blocks 70%of dine dust particles.



### 32 Mesh Fine Dense Network

Dense Mesh prevents the insects from penetrating into the room. It blocks more than 50% of fine dust and provides a clear, spectacular view from the front door and window which creates a pleasant environment in the room. The high material impact used in this products helps in no corrosion. Unlike screen made of aluminum or stainless steel, Poongchang's mono filament yard keeps the product much stronger than those.



### 27 premium fine mesh net

Advanced functional screen. Anti-inflammatory treatment (fire resistance) with no adhesive required for installation. This is a well-ventilated apparatus and no distortion will come easily as the product is made of 27 special yarn



**Company Name :** National C&D

**CEO :** Lee June

**Website :** <http://www.nationalcnd.com>

**Address :** 518-146, Hwangsan-ro, Hwangsan-myeon, Gimje-si, Jeollabuk-do, Republic of Korea

**Email :** beauty9@gmail.com

**Phone :** +82 63-715-1155

### Company Profile

Since the foundation in 1987, NATIONAL C&D has provided high quality spectator seats and retractable seating systems that enhance the experience of millions of spectators who come to watch sports games, movies and various performances.

Our corporate vision states: Be one of the world's leading manufacturers and providers of public seating solution by Committing to providing the highest level of quality in service and products; Cultivating lasting relationship with customers and employees; and Focusing on driving sustainable, long-term growth. Based on the customer satisfaction and trust we have built over many years, NATIONAL C&D strives to continually enhance our services to exceed customers' expectations.



### Spectator Seat NSC-2011

**Size(mm):** W450\*D554\*H927

**Material - seat, back, armrest:** high density polyethylene (HDPE)

**Material - Frame:** aluminum die casting

**Finish:** powder coating

**Molding type:** blow molding

**Application:** stadium, arena

**Color options:** Red, Blue, Orange, Green, Grey

**Product description :** NSC-2011 is a blow molded, gravity fold spectator seat with its frame made of aluminum to enhance strength and durability. Its ergonomic design as well as hollow space that acts as an air cushion provide maximum comfort to the user. NSC-2011 is a popular choice for both VIPs and general spectators.

NSC-2011 is a blow molded, gravity fold spectator seat with its frame made of aluminum to enhance strength and durability. Its ergonomic design as well as hollow space that acts as an air cushion provide maximum comfort to the user. NSC-2011 is a popular choice for both VIPs and general spectators.



### Spectator Seat NSC-2030

**Size(mm):** W428\*D538\*H895

**Material - seat, back:** high density polyethylene (HDPE)

**Material - armrest:** nylon

**Material - Frame:** aluminum die casting

**Finish:** powder coating

**Molding type:** blow molding **Application:** stadium, arena

**Color options:** Red, Blue, Orange, Green, Grey

**Product description :** NSC-2030 is a blow molded, spring fold spectator seat with its frame made of aluminum to enhance strength and durability. Its ergonomic design as well as hollow space that acts as an air cushion provide maximum comfort to the user.

NSC-2030 is mounted on beam so that its seat center can be adjusted between 450-550mm, providing flexible arrangement options. When the seat is in the tip up position, it fully covers the backrest, protecting the surface where the spectators make direct contact and allowing added leg room as well as wide walkway access. NSC-2011 is a popular choice for both VIPs and general spectators.



### Spectator Seat NSC-1015

**Size(mm):** W435\*D460\*H400

**Material - seat, back:** high density polyethylene (HDPE)

**Material - frame, leg:** aluminum die casting, steel

**Finish:** powder coating

**Molding type:** blow molding

**Application:** stadium, arena

**Color options:** Red, Blue, Orange, Green, Grey

**Product description :** NSC-1015 a blow molded, non tip up seat whose seat center can be adjusted between 435-500mm. Its ergonomic design as well as hollow space that acts as an air cushion provide maximum comfort to the user. By using three different types of under structures, it can be installed either on the floor or wall. NSC-1015 is a popular choice for general spectators.



**Company Name :** DAE SUNG MEDICAL CO.,LTD

**CEO :** Yang Wyong Ho

**Website :** www.ds-medi.co.kr

**Address :** 46, Wonsing-gil Hwangeung-myeon,  
Iksan-si, Jeollabuk-do, Korea

**Email :** ds-medical@hanmail.net

**Phone :** +82-63-856-7334

**Company Profile**

Daesung Medical co.,ltd. is a specialized production business which is in pursuit of continuous technical skill cultivation & development through it's 30 years' experience in cotton fiber manufacturing, and technicians of the length of service of over 10 years.



**Cotton Nonwoven Fabric**

**Product description (specification)**  
: Manufacture non-woven cotton fabric using 100% natural fiber, cotton.

**Features and Advantages**  
: Using only natural fiber harmless to human body, we can manufacture natural fabric for personal hygiene or medical use in various formats that is eco-friendly and innocuous to human body



**Cotton Nonwoven Fabric**

**Product description (specification)**  
: Manufacture padding using 100% natural fiber, cotton

**Features and Advantages**  
: Using only natural fiber harmless to human body, we can manufacture natural fabric for personal hygiene or medical use in various formats that is eco-friendly and innocuous to human body where users can meet buyer's needs.

**The Others**  
: Non-woven cotton fabric and padding indicate the binding state of cotton wool and depending on what products to use for, users can apply in various formats.



Company Name : Giheung Industry Co.

CEO : Jeong Soonmo

Website : [www.ghisky.com](http://www.ghisky.com)

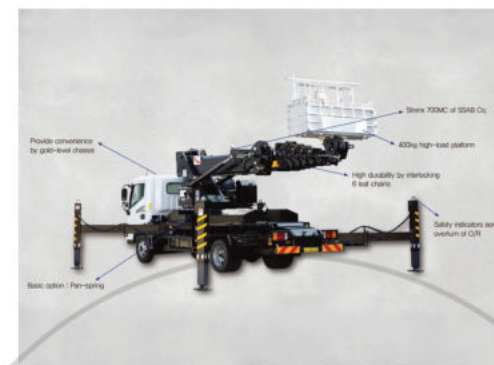
Address : 142, Seogam-ro 3-gil, Iksan-si,  
Jeollabuk-do, Korea

Email : [widejsm@naver.com](mailto:widejsm@naver.com)

Phone : +82 63-833-2468

### Company Profile

Our GiHeung High place operation car is proud of its high cost-effectiveness on equal work in its category, reflecting value change of our customers. We will consistently strive to develop the technology and user-oriented equipment



#### GH-2906A

29M (440Kg)  
Giheung Industry's best-selling car



#### GH-4607A

46M (550Kg)  
Initial 550Kg certification



**Company Name :** CT&S CO., LTD.

**CEO :** Lee Kil Wan

**Website :** <http://ctands.tradekorea.com>

**Address :** 945-6, Girindae-ro, Deokjin-gu,  
Jeonju-si, Jeollabuk-do, Korea

**Email :** intlkw@naver.com

**Phone :** +82-63-214-0700

### Company Profile

The company was established in July 2015 to develop and commercialize heat-emitting paper made by mixing carbon fiber and wood pulp to maximize conductivity, as well as ACF water purifiers.



### ACF Water Purifier

#### Product description (specification)

: A under-sink type direct-feed water purifier that eliminates residual chlorine, heavy metals and general bacteria, and produces healthy water with rich minerals by taking advantages of BET characteristics from ACF (activated carbon fiber) and adsorption capability from well-developed micropore design.

#### Features and Advantages :

- Requires just normal tap water pressure for filtration; works without electricity; offers zero percent water wastage; long lasting with ACF that can work 2-3 times longer than conventional filters
- Usable after sterilization at 80 for half an hour
- Unlike conventional purifiers that require 4-5 filters, the use of only 2 filters saves maintenance cost and efficiently reduces space under your sink.
- A wide variety of models for your best choice fit to the application and water quality
- Gains popularity in Southeast Asia, India and China with comparatively high calcium concentrations in tap water as ACF adopted water purifiers exhibit excellent performance in reduction of TDS (1800ppm=>40ppm)



### ACF Water Shower

#### Product description (specification)

: The shower head filter with ACF (activated carbon fiber) adopted is indispensable in the era in which showering water is as important as drinking water because the ACF filter softens water and removes rust and residual chlorine in tap water thereby helping keep your skin healthy.

#### Features and Advantages :

- By taking a shower without a water filter, you are more susceptible to water-born chlorine and its byproducts 7-9 times greater than by merely drinking unfiltered water via inhalation through your body skin, eye, nose and respiratory organ). The ACF shower head filter provides solution by perfectly neutralizing water laden with chemicals.
- The ACF filter is not damaged in water as hot as 80.
- Helps nurture and nourish more delicate and elastic skin
- Effective against skin issues like eczema and acne
- Helpful to avoid dandruff and flaky scalp
- Good for healthy skin of newborns, children and the elderly



**Company Name :** Jung Ang Steel

**CEO :** Chun Gyeongsook

**Website :** www.jascroof.com

**Address :** 5, Seogam-ro 7-gil, Iksan-si,

Jeollabuk-do, Republic of Korea

**Email :** global@jascroof.com

**Phone :** +82 63-832-3988

### Company Profile

Since its establishment in 1998, Jung Ang Steel Co., Inc. has been manufacturing roofing material including Stone Chip Coated Steel Roof Tile. Stone Chip Coated Steel Roof Tile has been exported to more than 30 countries in the world, and its quality has been recognized as the best in many countries.

Recently, we released a new item, solar roof tile in which metal roof tile and solar panel are integrated. This Solar Roof Tile can reduce the electricity cost while maintaining an aesthetic beauty.



### Solar Roof Tile

**Aesthetics** – Unlike existing solar modules, JASCO Solar Roof Tiles match naturally with metal roof tile, enhancing aesthetics of structures.

**Structural Stability** – Compared to existing solar modules, JASCO Solar Roof Tiles are more durable to typhoon and earthquakes. Unlike existing installation methods, this does not require the drilling of roofing materials, making it free from water leakage.

**Durability** – Mineral coating protects tempered glass from damage or corrosion by U.V. or water, improving durability.

**Easy Installation** – Roof and solar module are installed at once, making installation convenient and efficient.



JASCO  
STEEL ROOFING SYSTEM

### Stone Chip Coated Steel

#### 1.SUMMARY

- It is the best natural disaster resistance roof tile.

#### 2.FEATURES

- This is light in weight yet firm.
- It has quality of strong wind resistant like typhoons and earthquakes.
- It is elegant in colors and designs.
- Easy maintenance
- High fire resistant.
- It has long lifespan with excellent durability.

#### 3.SPECIFICATION & FUNCTION

-Its light weight is favorable for timber houses and not only for the construction of new buildings but also for the remodeling of existing roofing.



**Company Name :** INECO Inc.

**CEO :** Shin Jae Moo

**Website :** <http://www.in-eco.co.kr>

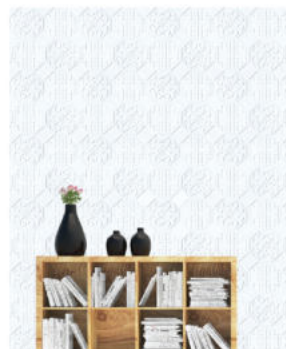
**Address :** B-305,109, Banlyong-ro, Deokjin-gu,  
Jeonju-si, Jeollabuk-do, Korea

**Email :** ihkim@in-eco.co.kr

**Phone :** +82-63-245-3004

### Company Profile

The living pattern of modern society is indoors in 90%, and the environment of interior space that spend the most time will become more important in the future. We are developing functional eco-friendly building materials that purify the environment of these spaces. For the first time in the industry, we utilized the functions of natural porous materials to register original technology patents. It is a product that has excellent product convergence and is fused with new materials and new technology. It is a product engaged in research and development by cooperating with specialized research institute through government supported R & D project. INECO is getting ready to leap to the world by acquiring relevant product certifications.



### IECO HAN block

**Product introduction (specification)**  
: 250 ×250 ×12.5 / 1BOX / 16EA, weight: 0.8kg / 13kg, 3 COLOR (white, yellow, gray)

#### Features and Advantages

- Self-regulation of humidity, purification of harmful substances, environment-friendly function of living odor purification and mosquitoes. It does not kill the mosquito but blocks access, performs immunity enhancement functions, etc., and additional convenience features can be selectively strengthened according to preference
- It can be installed easily by anyone with a standardized size with DIY products.
- Disperse the fibers evenly inside the product to prevent scratches caused by debris.
- Can be used as an indoor fragrance by using desired fragrance or essence.
- Designed as a line of traditional oriental window designs, with 6 pattern designs configured products



### IECO SOLID block

#### Features and Advantages :

- It is a product with a three-dimensional structure that deviates from the design of a flat shape. It can produce a variety of atmosphere depending on the arrangement by utilizing the continuity of a monotonous pattern.



### IECO HANGUEL block

#### Features and Advantages :

- Designed with embossed Korean characters, it has 14 designs
- Can be expressed in various foreign languages



**Company Name :** Usechem

**CEO :** Lee Sooha

**Website :** <http://usechem.co.kr/en>

**Address :** 78 Seogam-ro 1-gil, Iksan-si,  
Jeollabuk-do 54586 Korea

**Email :** [js.im.usechem@gmail.com](mailto:js.im.usechem@gmail.com)

**Phone :** +82 63-834-2271

### Company Profile

Usechem Co., Ltd. is a manufacturer of advanced chemical products & coatings such as urethane elastic floor coats, cold plastic road marking paints, ecothermal insulation paints, non-slip coats & floor coats, emulsion/acrylic resin/adhesive, and adhesion promotor.



### Acrylic Resin Emulsion – AcroRoute®

AcroRoute® Series is a room temperature curing type plastic paint designed and manufactured in accordance with KS M 6080 – 5 specification. It is a solvent-free type environment-friendly road marking paint cured by radical reaction by liquid or powder curing agent. The usage includes the center line of the road, the road boundary line, the outer sideline, the overtaking line, the road lane, and more.



### Automobile Coating E-Coat

E-Coat is a RUBBER base natural drying under coating for vehicle's panel like under wheelhouse, under floor and fuel tank. It is specially designed to prevent a corrosion from calcium chloride in winter and anti-chipping from sands and stones.



### Urethane Elastic Pavement Material - USTHANE

USTHANE the elastic pavement material is mainly composed of polyurethane resin and has excellent abrasion resistance and durability. Urethane flooring produced by Usechem has excellent elasticity characteristics, excellent impact absorption, and excellent walking feeling.





**Company Name :** JEONGSEOK Chemical

**CEO :** Kim Yonghyeon

**Website :** <https://jschem.co.kr>

**Address :** 192, Wanjusandan 5-ro, Bongdong-Up, Wangju-Gun, Jeollabuk-do, Republic of Korea

**Email :** bluepuz@jschem.co.kr

**Phone :** +82 63-260-2248

### Company Profile

Since its foundation in 1990, Jeongseok Chemical has been leading the coating industry technology of Korea

Made with technology and sincerity towards the customers, JS CHEM enhances competitiveness on various products through differentiation. Thank you!"



### Safety Coating

The coating products of Jeongseok Chemical for road surfaces in special zones include the two-pack type products which utilize the methyl methacrylate resin, epoxy resin and Modified acryl resin, and are used for coating of special zones, slip prevention and grooving zones. The product is the best choice for safety as it offers the outstanding road-adhesion, durability and wear-resistance.

Application: Anti-skid coating, coating of special zone and school zone, grooving coating, parking lines.

The product is classified by main binder and can be selected for your applications.



### Line Marking Paint

Jeongseok Chemical provides a various line marking paint. The product is manufactured according to the quality standards defined under KS standard, AASHTO. It has excellent resistance to abrasion, chemicals, salts and water.

Application: Roadmarkings on asphalt and concrete roads& Markings on runways crosswalk line, parking line, stop line and other symbolic characters.

Paints are classified by color into white, yellow and blue; and divided into the following 5 types depending on their type and construction method.

### Waterproof Coating



The waterproof products of Jeongseok Chemical consist of urethane and epoxy products. Urethane products retain an excellent tensile strength, chemical properties which are unique to urethane, and are outstanding in elongation and elasticity. These are one of the best products for indoor outdoor waterproofing of various buildings (including residential and large buildings).

Epoxy products have a relatively high degree of adhesion to concrete and metallic surfaces compared to the others, and also offer a great level of resistance to water, alkali and acid.



**Company Name :** CyberMedic

**CEO :** Jeong Hochun

**Website :** <http://www.cybermedic.co.kr>

**Address :** #203 Standard Factory, 20-23, Yakchon Ro 8-gil,  
Iksan-si, Jeollabuk-do, 570-979 Korea

**Email :** [wsales@cybermedic.co.kr](mailto:wsales@cybermedic.co.kr)

**Phone :** +82 63835 5114

### Company Profile

Cybermedic Corp. Promise you to provide the hightech medical equipment. Through continuous research, development and best efforts to be paramount company in the 21st century.



### Spine Balance 3D

Measurement of spine muscle strength imbalance for musculoskeletal patients and athletes.  
(Improvement of core muscle function, deep spinal muscle strength, muscle-nerve coordination and proprioceptive function)



### Space Balance 3D

Measurement of postural muscle strength imbalance, and training of postural muscle strengthening and coordination



### I Balance S

Evaluation of postural balance ability, improvement of postural balance and falls prevention through balance training (Promoting balanced capability for falls prevention, ataxia improvement, reduced vestibular patients, elderly patients and the control of posture, improvement of neuromuscular control ability, improvement of proprioceptive sensory function)



**Company Name :** DAESHIN AIR\_CON, CO.,LTD

**CEO :** Jun Yulgyo

**Website :** <https://www.daeshinaircon.com>

**Address :** -

**Email :** audis777@daum.net

**Phone :** +82-31-491-1925-8 , +82-10-4659-7935

### Company Profile

DAESHIN AIR CON CO.,LTD we've been manufacturing industrial air-conditioner heat exchanger for 40 years .Based on this technology , the company manufactures heat exchangers for refrigeration and refrigeration and deals with various industrial and commercial refrigerants , and produces heat exchangers using cold and hot water and exports them to Korea and abroad.



### Agricultural Fan Coil

The internal temperature of the entire facility house can be kept even by using underground water and cold water systems.



### Fancoil Unit

This Product maintains indoor air at proper temperature in the office and in the room using cold and hot water.



### Condensor Unit

Industrial and agricultural air conditioner outdoor machine (condensor)



**Company Name :** HANDOK ELEVATOR CO., LTD.

**CEO :** Yu Gijun

**Website :** hdlift.co.kr

**Address :** 77-24, Byeolsannongwon-gil ,  
Samnye-eup , Wanju-gun

**Email :** handokel@hanmail.net

**Phone :** +82-63-291-0441, +82-63-291-0015

### Company Profile

Having grown together customers on the positions of customers since established in 1991, Handok Elevator Co., Ltd provides synthetic services (manufacture, installation, replacement, maintenance) on elevators. We have been producing only complete products and supplying our products to domestics and overseas markets applying sensual design and high efficiency energysaving technology .

We are registered as a contractors(MAS) in the national marketplace of the public procurement service and was selected as a promising small and medium enterprise(G PASS) in the overseas market for the first time in the Korean elevator industry to be certified for excellency and stability.



**Passenger Elevator**

CAGE DESIGN WALL STS VIBRATION , MIRROR DOOR - STS VIBRATION



**Escalator**

30°/35° HEAVY DUTY PUBLIC TRAFFIC TYPE ESCALTOR



**Company Name :** Haegeon

**CEO :** Eom Daeung

**Website :** www.ihg2w.com

**Address :** A-201 (Technoville), 109 Banryong-ro, Deokjin-gu, Jeonju-si, Jeollabuk-do, Republic of Korea

**Email :** edw7132@naver.com

**Phone :** +82 63-263-3181

### Company Profile

As a company that directly develops and produces LED and road facilities by integrating LEDs, it won the "Korea Intellectual Property Office Award" at the "Korea Invention Patent Exhibition" in 2019, and is expected to grow after receiving the certification of excellent product recommendation business in 2020.

Currently, a number of supplier contracts have been completed for the procurement agency, and the next product item has been completed more than 90%, and it is a company that constantly strives.



### LED elastic lane indicator

Secure a certain brightness

-The light source and the control unit are embedded in the ground and driven to emit silicon, which is a light emitting unit through a diffusion effect, so that visibility is secured by expressing a constant light intensity at various angles.

Product durability test completed

-Test name: Wear resistance test (KS M 6080): Korea Institute of Construction and Life Testing

-Test content: As part of the road paint test, the vehicle tire is actually stepped on and passed, and the durability of the product is tested under adverse conditions on the road.

-Test goal: 200,000 shocks

-Test result: No abnormality (passed)

Secure safety for pedestrians and bicycles

-Primary safety is secured for pedestrians and bicyclists with the cushion effect of the light emitting part protruding to the ground

Restoration ability and impact minimization of the light emitting part

-As all parts except the light emitting part are buried in the ground and driven, it can be used continuously without being pressed or damaged.

-Other products cannot function because the product is buried under the ground when the vehicle is continuously impacted.

Excellent maintenance convenience

-Improved maintenance convenience with an internal module replaceable design (module exchange: takes about 1-2 minutes)

-Traffic control and working time are significantly reduced compared to other products (total replacement)

-When the light source unit and the light emitting unit are damaged due to the dualization, the light source unit is reused, and only the light emitting unit, that is, silicon can be maintained