
Product Guide

Traffic Paint / Waterproof & Floor Coating / Industrial Coating



Good for nature Good for people



Since its foundation in 1990,
JS CHEM has been leading the coating industry technology of Korea
Made with technology and sincerity towards the customers,
JS CHEM enhances competitiveness on various products through differentiation.

Thank you!



History

- 2014.05** Proclamation of new CI, BI_ Right procedure of paint
- 2013.12** Excellent Green-Biz Certificate
5 Million Export Tower Awardz(KITA)
- 2013.08** New Excellent Technology Authentication of producing
waterproof and anti-corrosion material
for advanced water treatment facility
with outstanding ozon-proof qualities
- 2012.02** Obtain export order of UAE nuclear power plant (10 billion)
- 2012.01** Jeonbuk Economy Grand Prize (Chamber of Commerce & Industry)
- 2011.06** Venture Business Certificate
- 2009.11** Designated as Promising Export Firm (Small and Medium Business Administration)
- 2008.09** Technology Innovative Small and Medium Business (INNO-BIZ) accreditation
Registered supplier of Korea Hydro & Nuclear Power Co. Ltd
- 2007.06** Outstanding Company of Employment of the Disabled
- 2006.11** Promotion of Commercialization
of New Technology Industrial Service Medal
- 2006.09** Management Innovative Small and Medium Business (MAIN-BIZ) accreditation
- 2005.03** Outstanding Company Management award (Minister of Commerce, Industry and Energy)
- 2005.01** Production of eco-friendly functional coating materials and natural paint (Brand Aein Cheonji)
- 2004.11** Business with Outstanding Labor-Management Culture accreditation (Minister of Labor)
- 2004.04** First in the industry to be accredited in Green Hibon Eco-friendly construction material
- 2003.09** Prime minister citation on Promotion of Employment of the Disabled
- 2003.06** Quality Management Achievement Award (Governor of Jeollabuk-do Province)
- 2000.06** KSA/ISO 9001 quality assurance system
(KSA ISO-0068)
- 1998.04** Constructing and moving headquarter and factory to Wanju Industrial Complex
- 1990.12** Company foundation



Overseas market



Asia

Philippines
Mongolia
Kazakhstan
Vietnam
China
HongKong
Japan
Myanmar
Cambodia

Middle East

Afghanistan
Iraq

Africa

Ghana
Ethiopia

Oceania

Australia

America

U.S.A

Europe

Russia

| Major Exports | Rate % |
|--|--------|
| Road Marking Paint Thermoplastic(C5) | 56% |
| Coating fof Safety Zone (MMA)/Floor | |
| Film Coatings Materials (GS-Coat) | 37% |
| Water proofing Coatings (PU/Epoxy/Unicrete) | 7% |

Contents

Traffic Paint 06

Line Marking
Safety Coating
Joint Sealant

Waterproof & Floor Coating 11

Waterproof Coating
PU
Epoxy
Quick Drying Type
Bridge Waterproofing

Floor Coating
PU
Epoxy
Hybrid

Industrial Coating 15

GS Coat (Film Coating Materilas)
Auto Parts Coating

Heavy Duty

Certification



Line Marking

Product overview

We provide a various line marking paint.

The product is manufactured according to the quality standards defined under KS standard, AASHTO. It has excellent resistance to abrasion, chemicals, salts and water.

Application

Roadmarkings on asphalt and concrete roads & Markings on runways crosswalk line, parking line, stop line and other symbolic characters.

Paints are classified by color into white, yellow and blue; and divided into the following 5 types depending on their type and construction method:

Product Series

Air drying paint(solventbone)

Air drying Paint is made by mixing synthetic acrylic resin and white, yellow pigment as a solvent type.

Heating paint

Heating Paint is made by mixing synthetic acrylic resin and white, yellow pigment as a solvent type.

Emulsion paint

Emulsion paint is specially modified acryl emulsion based coating, using high quality pigments, which has remarkable abrasion and weathering resistance. This coating is used for making traffic lane on an asphalt or concrete surface.

Cold plastic paint (MMA type)

Cold plastic paint that is cured at room temperature is one that is based on proven methyl methacrylate (MMA) resin as high-performance coating featured by excellent adhesion with the concrete surface as well as durability thereby being applied for roadway or runway line markings.

Thermoplastic paint

Thermoplastic paint is power type. Made by mixing thermoplastic synthetic resin with white, yellow or blue color pigments and extender pigments.

this non-solvent type of coating is used for marking lines on the surface of roadway or runway.

This type fully satisfies Korean Standard KSM 6080 Class 4, AASHITO M-249 and other specification



Technical information

| Products | Properties | Usage | Application | Remarks |
|-------------------|--------------------------------------|---|----------------------------------|---|
| Air Drying | | 15cm X 44M /Liter Thickness: 75 μ m | Country Road Airport Taxiway | |
| Emulsion | Air Drying(Acryl) | Tack free: 5min White/Yellow/Blue | Various Line Recoating:30min | Water within 5% Passing time: 20min |
| Heating (Acryl) | Airless spaying Full Drying: 5min | 15cm X 34M /Liter Thickness: 100 μ m | heated 35~45°C Durable line | |
| Thermoplastic(C5) | Dry: 3min White/ Yellow | 30~35M /20kg bag Thickness : 2mm | Heated 190°C | AASHTO |
| Cold Plastic(MMA) | Best Durability Pot Life: 5~10min | 2 types for marker Cure time: ~60min | Careful to heat Special Maker | Peroxide Hardening |

Working condition

| | | Air drying | Emulsion | Heating | Cold plastic | Thermoplastic |
|-----------|-----------------|------------|----------|----------|--------------|---------------|
| Condition | Temperature(°C) | 5~40 | 5~45 | 5~40 | 5~40 | 0~40 |
| | Humidity(%) | below 85 | 40~85 | below 85 | below 85 | below 70 |

At some case, Adhesion to concrete road may be weaker than on Asphalt road for the laitance. Make sure on the surface without dew, frost or water, Use at over 3°C than dew point which makes water from the difference of temperature between air and the surface of road (Especially for winter, moisture can be freezed on the surface of road).

Please refer to Product Information and User Information for further information.



Air Drying paint



Emulsion Paint



Heating paint



Thermoplastic Paint



Cold Plastic Paint

Safety Coating

Product Overview

The coating products of JS Chem Corporation for road surfaces in special zones include the two-pack type products which utilize the methyl methacrylate resin, epoxy resin and Modified acrylic resin, and are used for coating of special zones, slip prevention and grooving zones.

The product is the best choice for safety as it offers the outstanding road-adhesion, durability and wear-resistance.

Application

Anti-skid coating, coating of special zone and school zone, grooving coating, parking lines.

The product is classified by main binder and can be selected for your applications.

Product Series

MAGICSTONE 2C

MAGICSTONE 2C is a methyl methacrylate (MMA)-based product that can be cured at room temperature. As high-performance coating with excellent features of adhesion on the concrete surface together with good durability, it is usually used for safety coating on roadways.

ESTONE PN

ESTONE PN is anti-Skid product that has excellent durability and adhesion, In particular, fast-curing properties allow it to be usable in winter season, being usually used in slope roads, hairpin bends and crosswalks.

ROAD FOAM HYDRO

ROAD FOAM HYDRO is a special modified acrylic emulsion based coating that uses high quality of pigments having durability and weatherability.

It is used for traffic markings on the asphalt or concrete pavements (bike lanes, sidewalks, etc.).

ESTONE E-5000

ESTONE E-5000 is Special modified epoxy based for old&new pavement of a road. Excellent adhesion aggregate and durability, applied onto sharp curve, slope.



Technical information

| Products | Properties | Usage | Application | Remarks |
|-----------------|-------------------|-----------------------------|------------------|----------------------|
| Estone PN | Poly ester - type | 1.8kg/m ² (4h) | Old asphalt | Peroxide hardening |
| Estone E-5000 | Epoxy (2parts) | 1.8kg/m ² (4h) | Old, New asphalt | Good adhesion |
| Magic Stone 2C | MMA type | 2.6kg/m ² (1h) | 100:2 mixing | Peroxide hardening |
| Road Foam Hydro | Water-borne | 0.29 kg/m ² (1h) | Pot Life: 24h | Environment-Friendly |

Direction for use

Oil on the surface of asphalt contained 5~7 times the water is completely dry after washing. Employ adequate methods to remove dirt, dust, oil and all other contaminants that could interfere with adhesion of the coating.

Check the cleaned well surface. If there are some water it must be dried and must be not dusty. Depending on the Temperature changes by adjusting the amount of hardener can be used.

- Thinner be used to adjust the workability.(Check usage)

If those maximum recoat times have been exceeded, the surface must be abraded by sweep blasting or sanding prior to the application of additional coats.

- Don't use the mixing product after pot life.

Precautions

If this mixing ratio is not correct, it can cause the paint film not to harden well and wrinkle.

High temperature of surface may cause to some problem of product, so it is moderate to work between 10°C and 30°C of surface temperature.

Keep it away from ignition.

Don't use this for other use.

After mixing well sufficiently, apply to surface with rake or roller.



Joint Sealant

Product Overview

This is a polysulfide sealant that meets the US Federal Specification (FS SS-S-200 E).

Hi Ure Seal has good oil Resistance, excellent elasticity, jet blast resistant, good durability and mechanical property.

It is two component type product which is used for airport runway, Sealant, joint. It is a fast curing type.

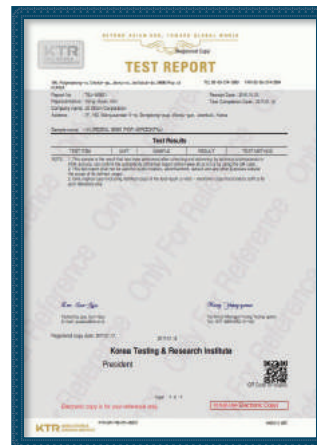
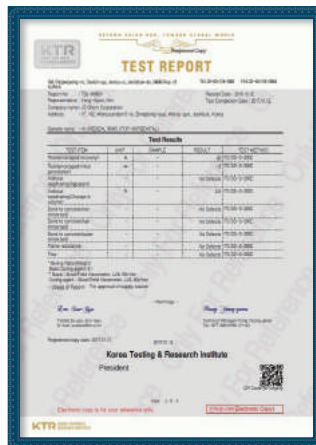
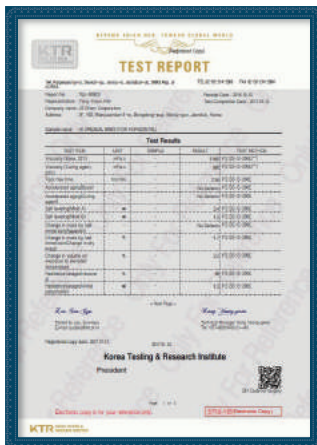
Characteristics

- Room temperature curing type and convenient to use
- Excellent durability and weather resistance
- Good oil Resistance and excellent elasticity
- Good Liquidity and stable liquid reactive carrying - Fast curing type - Self-Leveling Type

Application

- Protecting joint of concrete structures
- Used for joint of airport runway, aircraft parking area
- Sealant for use in building and civil engineering
- Sealants for use in our door applications and express way
- Sealants for LNG tanks and in nuclear power plants

Test Report



Waterproof Coating

Product Overview

The waterproof products of JS Chem Corporation consist of urethane and epoxy products. Urethane products retain an excellent tensile strength, chemical properties which are unique to urethane, and are outstanding in elongation and elasticity. These are one of the best products for indoor outdoor waterproofing of various buildings (including residential and large buildings). Epoxy products have a relatively high degree of adhesion to concrete and metallic surfaces compared to the others, and also offer a great level of resistance to water, alkali and acid.

Urethane

| Type | Product | Description and Application |
|--------------|----------------------|---|
| Primer | Hi Urethane Primer | This is used for primer of Hi-Urethane which has good bonding performance is based on flexibility and toughness of urethane unique properties. |
| MidCoat | Hi Urethane M6030 | It is excellent in abrasion resistance, impact resistance and adhesion, suitable for waterproofing in various type of buildings. |
| TopCoat | Hi Urethane Top Coat | Hi Urethane Topcoat is based on a combination of polyurethane and synthetic resin. It is excellent in tensile strength, weatherability, water resistance and alkali. |
| Non-exposure | Hi-Urethane NT-200 | This tar-free product is of eco-friendly and non-exposure type, which has no bleeding phenomenon. It is used in swimming pool, bathroom and concrete structure. |

Quick drying type

| Type | Product | Description and Application |
|---------|-----------------|--|
| TopCoat | Supertex Series | This is based on polymeric MDI containing NCO, hydroxyl-terminated polyether resin and amine chain extenders. It has flexibility, toughness, water and chemical resistance . As the type of 100% solids and non-solvent, it has no toxicity. |



Epoxy

| Type | Product | Description and Application |
|---------------------|-----------------|---|
| Primer | Seretite primer | As a Waterborne type primer for seretite, good adhesion and penetration property, excellent wetting property and odorless, no vocs. It contains no organic compound. |
| Surface preparation | Seretite | It has excellent adhesion and is usable for protection in floor and walls of water supply tank |
| Topcoat | Sepon Series | This non-solvent type of epoxy paint is used in concrete tructure and water tank. It is excellent in acid resistance, alkali resistance, salt water resistance and weatherability. |
| | Senupon Series | This cross-linking type of modified epoxy paint is certified by the Korean Register of Shipping for painting to protect corrosion in the inner side of steel members and interior/exterior painting in wastewater treatment facility. |

Bridge waterproof coating

| Type | Product | Description and Application |
|--------------|---------------|---|
| Non-exposure | Britec Series | The physical properties of this 1-pack special rubber type membrane product are not affected by heat which is generated during asphalt paving. It has an outstanding level of adhesion, tensile strength, thermal stability and elasticity. |



Floor Coating

Product overview

Products of JS Chem Corporation for floor are divided into urethane, epoxy and eco-friendly types. Products are mainly used on general floors and sports facilities. Eco-friendly products can be used in food factory.

Application

Sports facilities requiring elasticity,
Indoor car park, office floor, factory floor
Eco-friendly products can be used in food factory.

Urethane

| Type | Product | Description and application |
|---------|---------------------------|--|
| Primer | Hi Urethane Primer | This is used for primer of Hi-Urethane which has good bonding performance is based on flexibility and toughness of urethane unique properties. |
| MidCoat | Hi Urethane M7025, M-8015 | A floor coating materials that has excellent hardness, which is used in office floors, factory floors, etc. [hardness type 7025 : 70±5, 8015 : 80±5 |
| Topcoat | Hi Urethane Top Coat | Hi Urethane Topcoat is based on a combination of polyurethane and synthetic resin. It is excellent in tensile strength, weatherability, water resistance and alkali. |



Epoxy

| Type | Product | Description and application |
|---------|---|---|
| Primer | Epoxy Primer | 2 component type epoxy primer with features of good adhesion to concrete and excellent penetration. |
| MidCoat | Floxy Series Floxy S Floxy Transparent Floxy L-100 | It is used to protect the internal floors of concrete facilities , factory floor with heavy loads, high traffic areas and low maintenance. High quality epoxy coatings, which offer excellent adhesion to concrete, impact resistance and high gloss. These are easy to clean and used for coatings in interior floors of concrete structures and factory floors. it is used to protect the internal floors of concrete facilities , factory floor with heavy loads, high traffic areas and low maintenance. |

Eco friendly

| Type | Product | Description and application |
|---------|----------|---|
| TopCoat | Unicrite | UNICRETE is floor coating material for polyurethane-type concrete surface used by mixing Part 1, Part 2 and powder It is excellent in protecting concrete surface and water-proof effect and durability from external shocks or chemical substances. It is an innovative product designed to endure chemical corrosion, serious friction or frequent shock. |



Industrial Coating

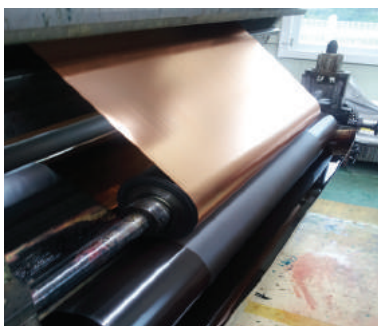
GS Coat (Film Coating Materials)

GS-Coat Series is film coating materials for PET to manufacture metallic yarn or glitters with various colors of dye. It has special curing speed and attachment for film to invent other usage for electronic coating and some special coating thanks to its characteristics.

Characteristics

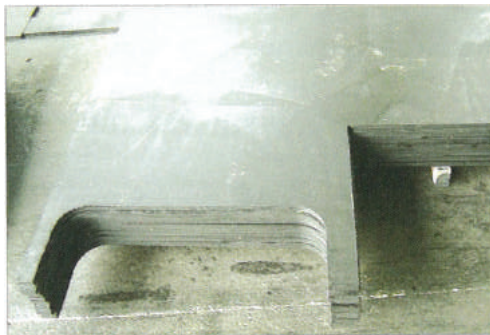
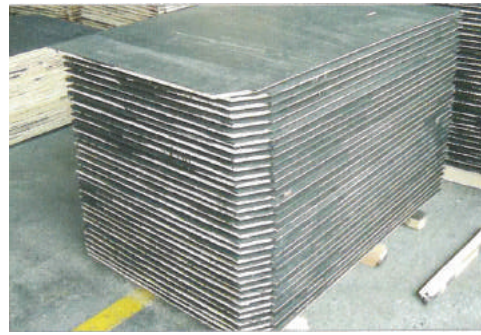
- Could be made very smooth and flexible film.
- Has good workability.
- Available with various colors.
- Excellent durability, chemical resistance and water resistance.
- Good slip and attachment for aluminum and base film.

| Application | Product | Description and Application |
|-------------------------------|---------------------|---|
| General Coating for yarn | GS Coat 2000 Series | Experience 30yr, Good Anti-chemical Good flexibility with strong property For hot region, PI type recommended JS type for dark colors Good to anti boiling, acid, dyeing. |
| Demend for Excellent adhesion | GS Coat 2300 | Excellent adhesion for yarn Good dyeing property on Ag Film Tight network for anti-fog for Electric. |
| Recoating | GS-Coat 2500 | For 2 times coating similar property with gs-2000. |
| Special Coating(6 μ m) | GS-Coat 2600 | 6 μ m thickness with special thinner. Low temp. coat(145~155 $^{\circ}$ C), flexible. |
| Low Cost Type | GS-Coat 6800-55 | Yarn for ST(fluorescent coating) Dilute with dye stuff flexible, low viscosity, 1component Good storage(over 6months) |



Paints for auto parts

| Type | Product | Description and Application |
|---------------------|----------------|--|
| | Hi-tan | This is a 2 component type of acrylic urethane-based unfading topcoat, which dries out quickly when applied, and has good weatherability and durability. It is used for automotive headlamp basecoat. |
| Acryl Urethane Type | Serethane 1000 | Serethane 1000 is a glossy, tile-like attractive topcoat, produces a smooth, slick and hard film which is readily cleaned. This coating has very good resistance to splash and spillage of salts and water. It is easily applied by airless or conventional spray. It has excellent gloss and color retention, weatherability, abrasion resistance and flexibility. |



Heavy duty Coating(anti corrosive)

| Type | Product | Description and Application |
|---------------------|-------------------|---|
| Acryl Urethane Type | Serethane 3380 | Serethane 3380 is two component. Serethane 3380 a glossy, tile-like attractive topcoat, produces a smooth, slick and hard film which is readily cleaned. This coating has very good resistance to splash and spillage of salts and water. It is easily applied by airless or conventional spray. It has excellent gloss and color retention, weatherability, abrasion resistance and flexibility. |
| Epoxy Type | Hydrotar 134 | Hydrotar 134 is 2-liquid type tar epoxy paint which consists of water soluble epoxy. It has no organic solvent with reduction of hazard on human body. Applied into concrete tank, marine structure and submerged construction. |
| | Sepon Senupon | This cross-linking type of modified epoxy paint is certified by the Korean Register of Shipping for painting to protect corrosion in the inner side of steel members and interior/ exterior painting in wastewater treatment facility. |
| Zinc | Shop Primer IZ131 | Self-curing inorganic zinc based anti-corrosive primer. electricchemical method. When doing pretreatment coating of steel plate, available of cutting or welding work within 5~10 minutes after coating. This is approved for application on blast cleaned steel plates and sections. (DNV Certificated(Cert. NO: K-2533 |



Certification







Head Office : 192, Wanjusandan 5-ro, Yongam-ri,
Bongdong-eup, Wanju_Gun, Jeollabuk-do, Republic of Korea
Tel. +82-63-260-2302 Fax. +82-63-260-2277

This document is exact, but it can be changed for quality improvement without notice.

For more information, please visit www.jschem.co.kr