

Forward to the World! GUNJI



Forward to the world

GUNJI
GUNJI



Gunji Korea

237 Ipseok-ro, Gimje-si, Jeonbuk, Korea (Zip code: 576-350)
TEL: +82-63-548-8855 FAX: +82-63-548-8857
e-mail: master@gunji.co.kr www.gunjikorea.com

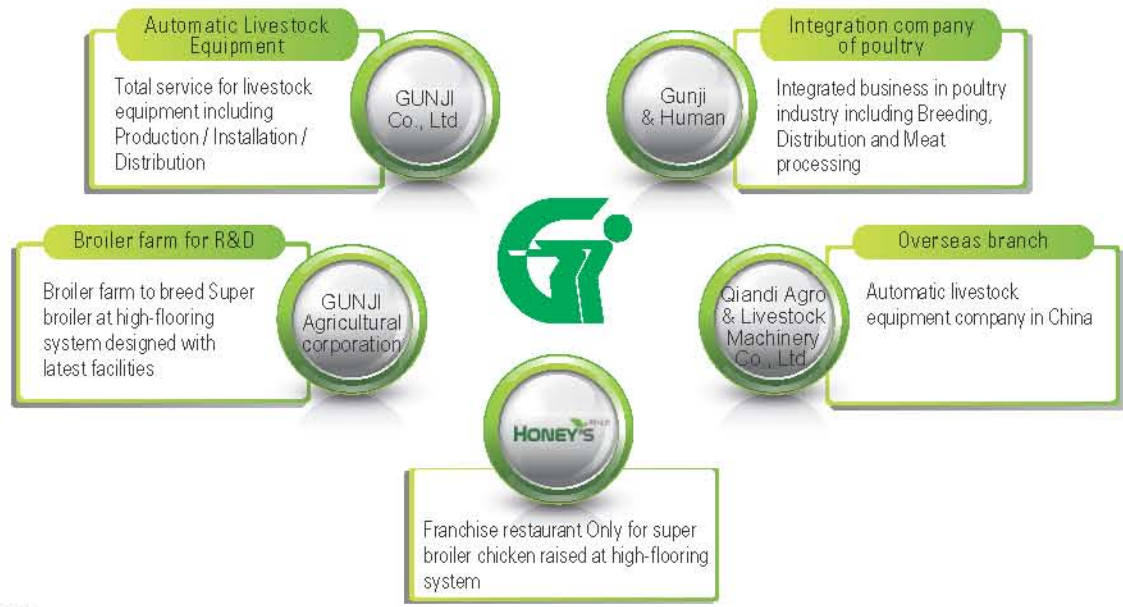
Gunji China (Qiandi Agro & Livestock Machinery Co., Ltd.)

Nanshanbanshichu, Pulandian-City, Dalian, Liaoning Province, 116200 China
TEL: +86-411-8313-6600 FAX: +86-411-8313-6604
e-mail: gunjichina@263.net www.gunjichina.com



GUNJI Co., Ltd.

GUNJI Co., Ltd., since established in 1990 under the slogan "GUNJI Livestock working on the principle of confidence", has been concentrating its primary efforts on the popularization of the competitive technical specifications as well as the advanced and automated livestock machineries while pursuing advancement of the livestock industry. GUNJI is currently gaining more and more recognition among the peoples in the industry concerned both in domestic and overseas with its reasonably competitive price & reliable quality.



History



- Apr 1990** Established GUNJI Livestock Co.
- Oct 1993** Developed Disk feeding system for poultry & pig
- Nov 1995** Incorporated to GUNJI Co., Ltd.
- Feb 1996** Developed Auto nesting system & Slat for breeder
- May 1998** Developed Auger feeding system for poultry
- Jun 1998** Established Qiandi Agro & Livestock Machinery Co., Ltd., overseas branch in China
- Dec 2000** Awarded the Excellent Small & Medium company leader prize of Jeonbuk (SMBA)
- Jul 2001** Acquired a patent for an automatic egg-handling system (KIPO of Korea)
- Oct 2001** Acquired a utility model patent for an Incinerator for carcass
- Jan 2002** Certified for ISO9002:1994/KSA 9002:1998 (UKAS)
- Jun 2002** Developed a Multistage livestock manure drying system
- Nov 2004** Certified for ISO 9001:2001
- Apr 2008** Acquired an invention patent for High flooring system (KIPO of Korea)
- Oct 2008** Certified for KSA 14001:2004 / ISO 1400:2004 (ISC)
- Dec 2009** Established GUNJI Agricultural Corporation
- Nov 2011** Received a prize by the Ministry of Knowledge Economy (Competition involving national small companies and businessmen)
- Dec 2012** Received a prize in a Korea-China business management related award (Academy for the economy and commerce between Korea and China)
- Jan 2013** Established GUNJI & HUMAN (GNH)
- Feb 2013** Acquired a patent for High flooring system with auto moving equipment for poultry (KIPO of Korea)
- Apr 2013** Selected as an INNO-BIZ company (SMBA)
- Jun 2013** 2013 Established a company annex research institute (KOITA)
- Sept 2013** Selected as a venture company
- Oct 2013** Acquired a patent for Farrowing concrete slats for pigs and relevant manufacturing methods (KIPO of Korea)
- Feb 2014** Established HONEY's Co., Ltd.
- Jun 2014** Opened the 1st franchise restaurant "Gungyeildak" at Seoul

Technologies & Certificates

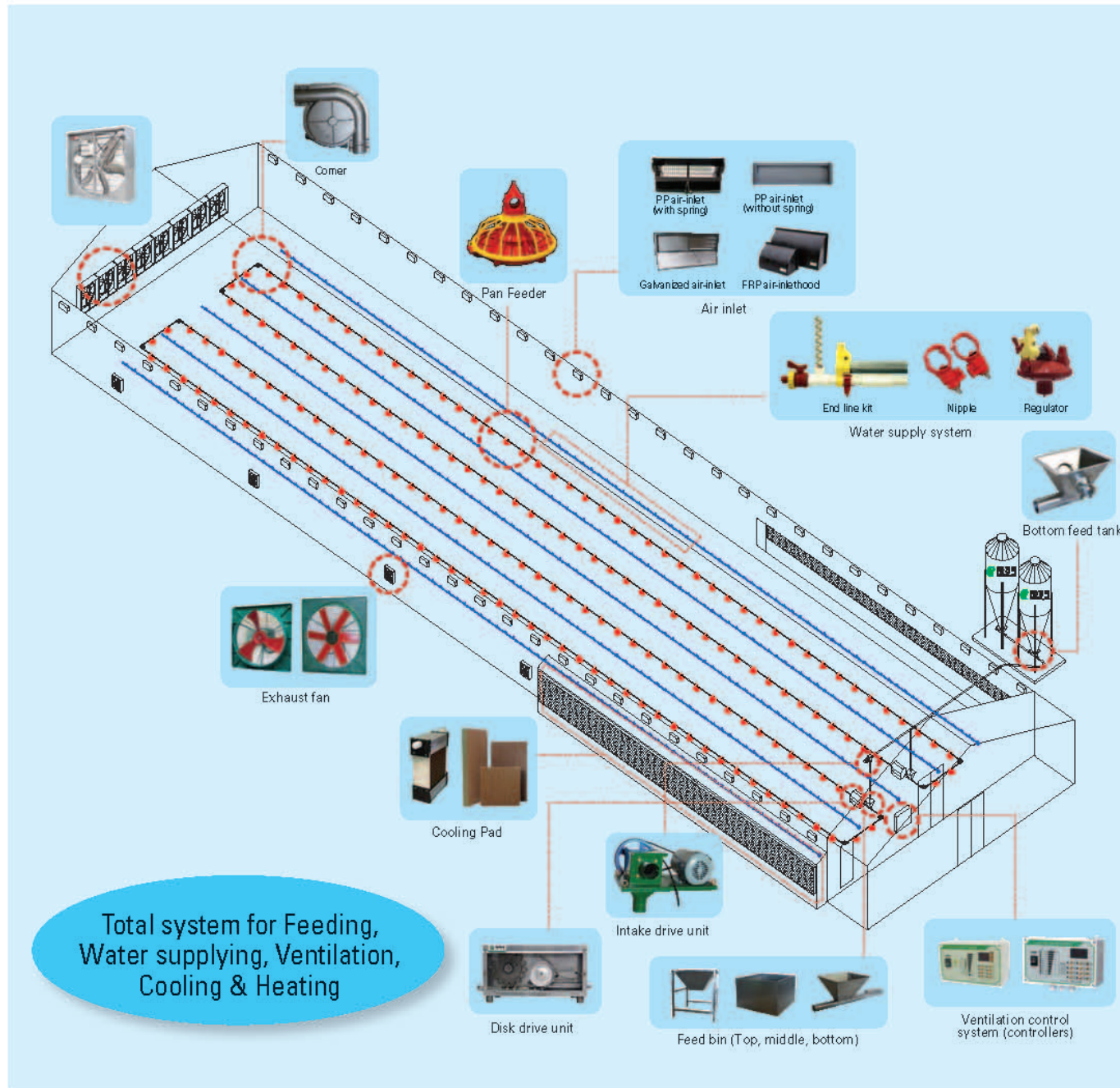


Overseas network



- Overseas corporation: Dalian in China
- Trading countries: Japan, China, Taiwan, Vietnam, Thailand, Bangladesh, India, Sri Lanka, the Philippines, Russia, Kazakhstan, Cuba, Iran, Turkey, Netherlands, Germany, Italy, Spain, Algeria, South Africa, America

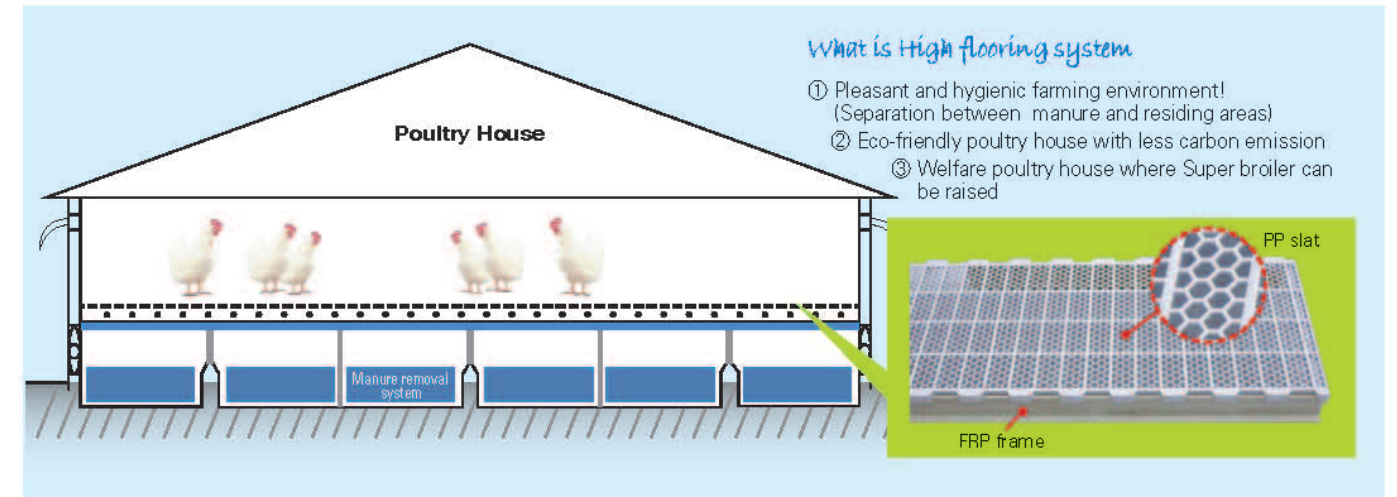
Poultry House Equipment



Products

- Feeding : Auger feeding, Disk feeding, Sensor, Intake auger system
- Water supplying : Nipple system, Bell type, Medicator
- Ventilation : Exhaust fan (50, 36, 24, and 20 inch), Air blowing fan (40 inch), Circulation fan, Air inlet, Inlet hood, Control system (controller)
- Cooling & Heating : Cooling pad, Fogger, Heater
- Others : High-pressure washing machines, Measuring equipment, Disinfection products
- Compost facility

High Flooring System _ ANYWEL HOUSE



Excellence in High flooring system (Patent No. 10-0786770)

- 1) The poultry is raised on the plastic slat.
- 2) The manure drops to the bottom and discharged out by manure removal system.
→ Increase productivity
- 3) The fresh (cold) air from outside is mixed with upper (warm) air, prevent temperature change in sudden.



High flooring system vs. Normal flooring farm (with litter)

Classification	High flooring system	Normal flooring farm
Floor state	Chickens reside on plastic slats elevated at a certain height and the manure drops to the bottom.	Chickens are raised on litter such as chaff or sawdust, reside at unhygienic environment with manure
Raising environment	The manure is dropped to bottom and discharged out by removal system to separate chickens from dirty environment	The animal and manure exist together in the same space.
Litter	No need	Necessary to be replaced with new litter whenever placing new chicks
In summer	Cooling effect from smooth ventilation in the space due to the elevation to a certain height	The productivity of chickens decreases when the temperature of house inside goes up drastically due to the heat from manure fermentation.
In winter	Saving heating cost because chickens are raised in a space with warmer air than on the bottom floor	Generation of harmful gas due to the heat from manure fermentation



Broiler Pan feeder



Broiler pan feeder (Yellow type)

Pan feeder for broiler (Yellow type)

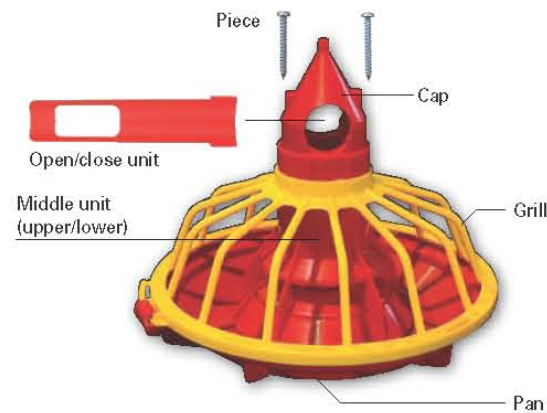
Initial stage :
Supplies feed through the outlet on the side of the middle unit
→ Access enhanced for chicks through the feed supply at the height of the pan feeder.

Later stage :
Supplies feed through the outlet on the bottom of the middle unit
→ Supplying only inside the pan

① Easy to assemble and clean
Can be cleaned easily and conveniently by using high-pressure water spray based on rotation-type lock and unlock system.

② Enhanced accessibility
Able to use from chicks to chickens before slaughter by adjusting the middle unit

③ Minimized loss of feed
Can adjust the volume of feed in 3 stages



- Yellow type (43ø) : 14 grill
- Components : Grill + Middle unit (upper/lower) + Disk pan + Cap + Open/close unit + Piece



- White type (43ø) : 16 grill
- Components : Grill + Middle unit + Disk pan + Cap + Open/close unit + Piece

Chick feeder



Chick feeder (round type)



Chick feeder (rectangle type)



Chick outlet

Breeder pan feeder



Breeder pan feeder (Female)

- ø42/ø48/ø60
- Spiral feeding control in various quantities by 100g, starting from a minimum of 250g
- Spacing control by 1mm, starting from a width of 38-46mm



Breeder pan feeder (Male)

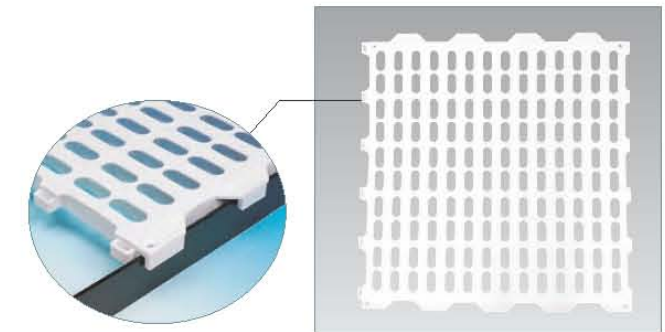


Measurable feeder for breeder

Nest & Slat for breeder

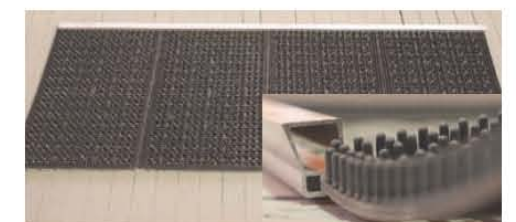
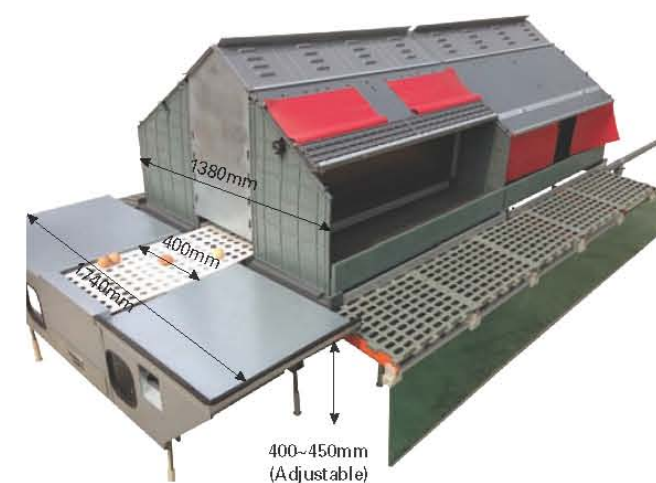
PP slat for breeder (600x600)

- Possible to use semi-permanent
- PP material with UV function
- Designed for manure removed very easy
- Non-chemical change
- Rapid, easy installation
- Labour saving
- Strong combination structure



Nest & Mat

Made from plastic to protect corrosion



Auger feeding system

Auger drive unit



- Components: Drive unit body + Geared motor (reducer+motor) + Limit sensor
- High-efficiency motor (3-phase)
- Dual safety device applied
- 43ø, 48ø

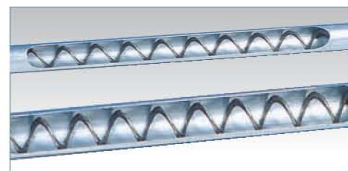


Auger hopper



Control box (Single phase / 3-phase)

Auger line section



- Auger spring and auger pipe
- Highly durable and flexible auger spring used
- 43ø, 48ø



Pipe connector



Sensor

Disk feeding system

Disk drive unit



- 43ø, 48ø
- Components : Drive unit + Gear + Roller + Reducer + Motor + Spring + Acryl



Control box (Single phase / 3-phase)

Disk line unit



- Disk wire/pipe
- Wire
- Pipe: No hole, 4-hole, 5-hole, and 6-hole(4m)
- Specification : 43ø, 48ø

- Components : Disk wire/Pipe + Corner + Pipe connector + Wire adjuster / Pipe hook + Connection ring/Couple ring



- Disk corner
- Top/bottom plates, wheels, washers, bolts/nuts can be sold separately.



Pipe connector

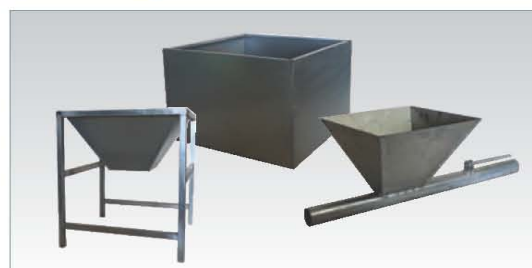


Sensor



- Connection ring / Couple ring
- To be used when connecting with the disk wire
- Size : 43ø, 48ø (*Connection tool can be sold separately.)

Hopper



Auxiliary bins (top, middle, bottom)

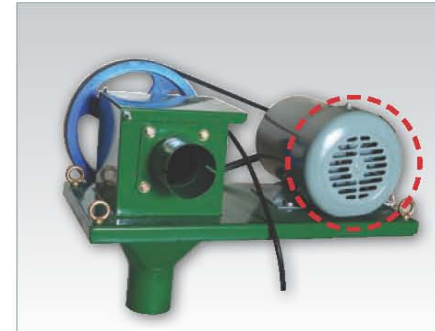


Bulk hopper
- Single/Dual, 43ø, 48ø - One way / Dual way

- Prevents a bottleneck of feed inside by internal vibrator
- Transport volume can be adjusted
- Components : Hopper + Iron plate + Flange

Intake system

Drive unit



Belt-type drive unit:
Single phase (1.1kw), 3-phase (1.5kw)



Gear-type drive unit (0.75kw)



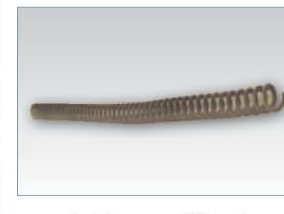
Intake controller (Single phase / 3-phase)

Bottom feed tanks

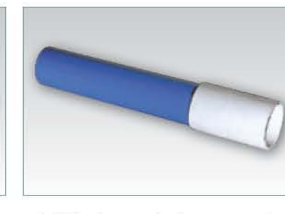


- Bottom feed tanks
- Single/Dual - One way / Two way, 45°
- straight/slope type

Intake line section



Intake auger (60mm)

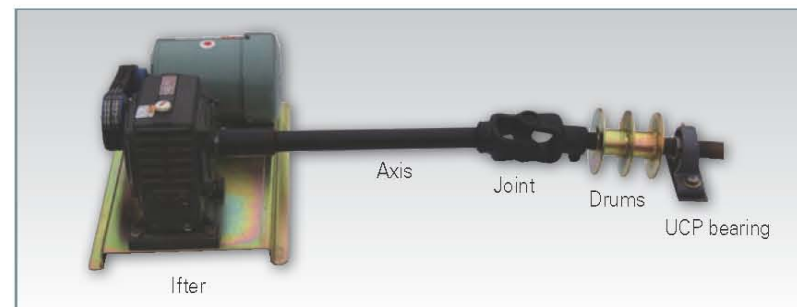


HDD pipe and pipe connector
(6m, 75mm)



T drop (for 75 mm)

Lifting system, controller



Lifter

- Axis
- Joint
- Drums
- UCP bearing



Winch controller



Manual winch
- 1,400lbs - Bracket included



Manual winch
- 1,500lbs



Manual winch
- 2,000lbs



Manual winch
- 3,000lbs



Electric lifter switch
- Single phase / 3-phase



Pulleys (Large, middle)
- Large : 90mm(PP)
- Middle : 48mm(PP)
- 48mm(Stainless steel)



Wire clips
(1/8", 3/16")

Wire clips

S hook



Stainless wire (3/16", 5.0mm)
Stainless wire (1/8", 3.8mm) Anti perch wire (1.2mm, Stainless)



Pipe hook/Wire adjuster

Water supply system



Features

- **Durability** : Robust and complete assembly structure
Highly shock-resistant, maintaining solidity and securing flexibility
- **Reasonability** : Easy to separate and distribute water supply points
- **Effects** : Expanding of farming area and guaranteeing of freedom in moving around
- **Compatibility** : Highly compatible with water supply systems
- **Economical feasibility** : Can be cleaned easily without the need for disassembling and assembling
- **Quality** : Main parts of the snap nipple are manufactured using high-quality stainless steel
- **Maintaining of dry condition of floor** : Prevention of water dropping or excessive water supply



Regulator (water pressure controller)

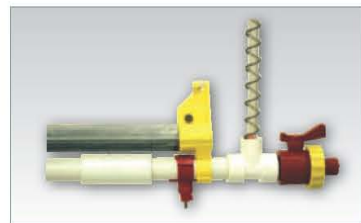
- Inlet water max. pressure = 2 bar (28 PSI); Outlet water max. pressure = 0.1 bar (1.4 PSI)
- Components : Water supply kit body + Direct water supply valve + Spiral hose + Spiral hose connector



End valve (3/4" M-3/4" M tap)



T Shape



End line kit (drain valve)

- Round pipe (ø26.6)
- Components : Valve + T shape + Water pressure check hose set



Direct water supply valve



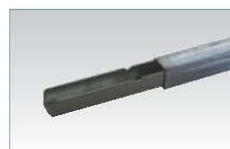
Nipple

- No water leakage due to a water supply pin not only made of stainless steel but also made through precision processing (Chemical liquid amount 35 µl/min)
- Water can be supplied in any direction of 360°, easy to detach and attach due to the snap-type connection (with Round pipe (ø26.6))



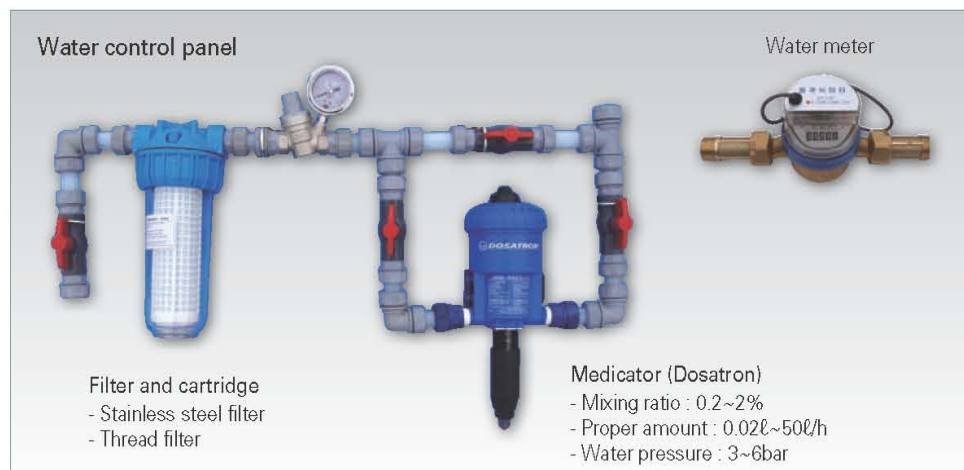
Nipple (PVC) pipe / slide connector

- 12 holes / 15 holes (25 cm / 20 cm interval)
- Strong, flexible and round plastic pipe
- Can be assembled and disassembled easily without using adhesive



Zinc pipe/ Zinc pipe connector

- 25mm×25mm (Length 6m)
- Prevention of sagging/distortion of the nipple pipe
- Insertion type connector for easy connecting



Water control panel

Water meter

- Filter and cartridge
- Stainless steel filter
 - Thread filter

Medicator (Dosatron)

- Mixing ratio : 0.2~2%
- Proper amount : 0.02ℓ~50ℓ/h
- Water pressure : 3~6bar



Hanger bracket

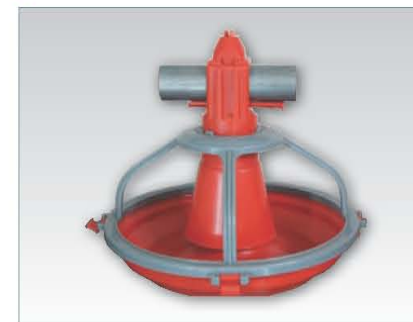
- For fixing zinc pipes and nipple pipes



Drinker for chicks



Feeding line

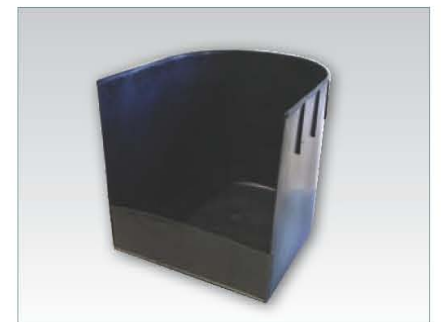


Pan feeder (4 grill)



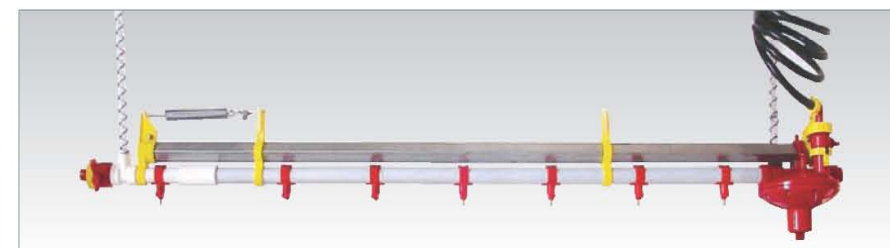
Feeder

- For 5 packs, 3 packs, and 2 packs
- Open/close equipment for stopping feeding (for duck breeder)



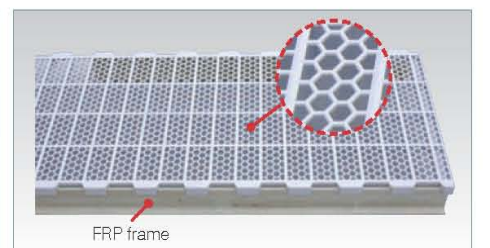
Nest

Water supply line



Nipple water supply equipment

Flooring



Plastic slat (1200x500)



Duck farming house of National Institute of Animal Science



Duck-raising facility of National Institute of Animal Science

Gestation section



Cases of an installation



Stall

Components	Standard	Material
25ø KS pipe Support round bar 12ø Steel troughs (Round type, rectangular type) Nipple pipe	2,100×650×1,000 2,200×750×1,000	KS pipe Galvanized Stainless steel 304

Farrowing section



Case of an installation



Components	Standard	Material
34ø KS pipe 25ø KS pipe Steel troughs (Round type, rectangular type) Water cups for piglets Nipple pipe flooring	1,800×2,100×1,000 1,800×2,400×1,000 2,000×2,400×1,000	Galvanized 304 stainless steel applied PVC panel



Stainless piglet feeder



Round trough for sow



PP trough for sow
(450×330×260)

Water cup



Stainless round water cup
(Large, medium, small)



water cup for piglet



Aqua nipple

Stainless steel nipple



Wet-type nipples
(Stainless steel)



Dry-type nipples
(Sows)



Dry-type nipples
(Piglets)

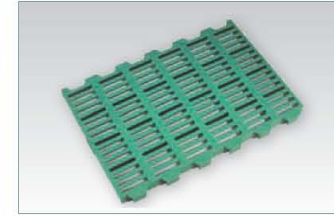


Socket nipple (Brass / Stainless steel)

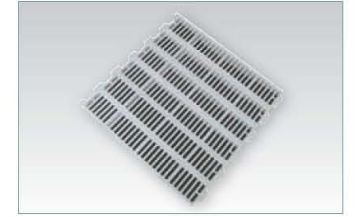
Piglet section



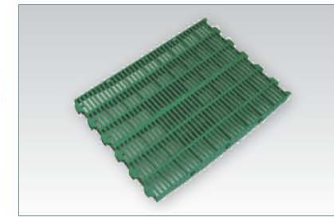
Case of an installation (incubator foundation)



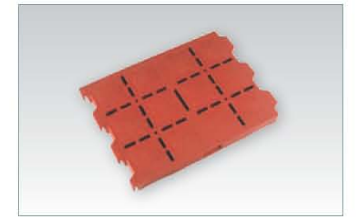
Slat for piglet (400×600mm)



Slat for piglet (600×600mm)



Slat for piglet (800×600mm)



Slat for piglet
(for sleeping, 400×300mm)

Round feeder



• 30kg (40 piglets) • 6~40kg (40 piglets) • 15~45kg (50 piglets) • 25~120kg (50 piglets)

2 side feeder



• Weaner~45kg • 15~65kg • Over 25kg

Others



Scale for pig (1350×440, 100g/200kg)



Water heating mat



Slurry ball



Dispenser



T drop, shoot pipe



Heating light (350w, 250w)



Heating shade

Ventilation control system

Comprehensive control system: Ventilation, feeding, water supplying, light control, cooling & heating management



Exhaust fan controller (cover 12 exhaust fans)
 - Single / 3 phase
 - 12 steps control exhaust fans
 - Able to set 12 steps by individual/group in every seconds



Variable fan controller (SL-300M, SL805)
 - Manual type
 - Incl. warning equipment etc.

Shutter / Hood



Shutter 20", 24", 40"
 - High durability and resistance against temperature and ultra-ray with eco-friendly plastic
 - Window frame with auto-adjustable flaps
 - Can be operated between -30°C ~ 70°C
 - Easy installation and economic price



Hood
 - Easy installation with "One-touch system" between fan and shutter
 - Available to apply the installed fan and shutter.
 - Refined design
 - Size : 500(24") , 600(24")



FRP air inlet hood
 (Large : 1,170x600x350, Small : 650x400x300)

Air inlet



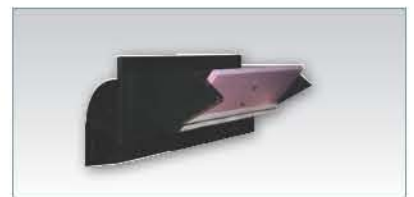
PP air inlet large type, without spring
 (1,110x330)



PP air-inlet with spring / 620x230



PP air-inlet (without spring) / 560x140



PE air inlet / 700x220



PE air inlet / 900x300



Galvanized air inlet (incl. shutter) / 230x915

Ventilation fan

Exhaust fan (50", 36")



Turbo fan (50", 36")



Centrifugal unit



Motor



Blade set



Belt

Model	Turbo fan (50")	Turbo fan (36")
Size (mm)	1,380x1,380x450	1,000x1,000x450
Blade Diameter (mm)	1,270	910
Airflow (CMH)	44,000CMH	21,000CMH
Power consumption (kw)	3-phase, 1.1 kw	3-phase, 0.55kw
Rotational frequency (RPM)	437	438
Frequency (Hz/RPM)	50Hz, 60Hz	50Hz, 60Hz

Chimney fan



- 300ø, 400ø, 500ø, 600ø
 - Adjustable amount of ventilation by height of fan according to each season

Variable speed fan

Low current consumption with waterproof motor and bearings with long durability



SLF-350A4-6
 (35cm/14")

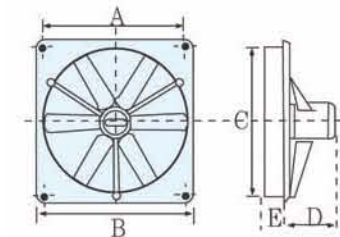
SLF-400A4-3
 (40cm/16")

SLF-450A4-3
 (45cm/18")

SLF-450A4-6
 (45cm/18")

SLF-500A4-3
 (50cm/20")

Type	A	B	C	D	E
SLF-350A	389	440	350	170	66
SLF-400A	450	505	405	208	54
LSF-405A	500	555	458	205	54
SLF-500A	567	620	510	225	68



1P, 220V-60Hz

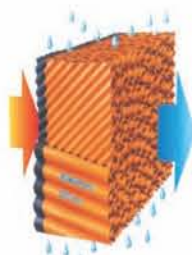
Type	Blade diameter (mm)	Power consumption (Watt/HP)	Current consumption (Amperes)	Condenser (Capacitor)	Air flow		Weight (kg)	RPM
					CFM	CMH		
SLF350A4-6	350	102/0.14	0.47	2.5µF/440	2,000	3,400	6	1,580
SLF400A4-3	400	288/0.38	1.1	6µF/450	2,910	4,947	9	1,650
SLF450A4-3	450	322/0.43	1.3	6µF/450	3,720	6,324	9	1,600
SLF450A4-6	450	322/0.43	1.3	6µF/450	3,720	6,324	9	1,600
SLF500A4-3	500	480/0.7	2.3	12µF/440	5,300	9,010	15	1,630

Cooling : Cooling pad

Cooling system



Minimization of stress using cooling effect from vaporization, due to lower the inside temperature by 5-9°C in summer.



Classification of products



Coated, None coated

By thickness (T150mm, T100mm)

By size (1500, 1800, 2000mm)

Heating system

Heater & others



- Caloric value : 100,000kcal/hr
- Complete combustion with high efficiency
- Automatic temperature control
- Embedded overheating prevention unit
- Maximized durability due to the stainless thermal blower



High-voltage transformer / Electrode bar Phototube Temperature sensor



Burner (of heater) Oil pump Nozzle / Burner motor con denser Condenser / Overheating prevention unit

Other products

Electric sprayer



- SS-150F
- 21kw (automatic/manual)
- Injection rate=50ℓ/h, Chemical tank=6ℓ, Fuel tank=1.5ℓ
- Size(LxWxH) 1350x340x290mm (Weight=9kg)



- SS-20EU
- AC220V, 20000RPM
- Injection rate=20ℓ/h, Chemical tank=6ℓ
- Size(LxWxH) 320x200x420mm (Weight=4.5kg)

Others



- High pressure washer(movable)
- workg. pr/max.pressure(kg/cm²) : 15/55
- Water(ℓ/min) : 20/50
- Motor : 2.2kw (Singl phase)
3.7kw (3 phase)
- Power supply : Single phase, 220V
3 phase, 220/380V
- Weight: 90kg
- Size(LxWxH) : 950x640x930mm



- High pressure washer(fixed type)
- Motor : 1.1kw
- Power supply : Single phase, 220V
- Weight : 43kg
- Size(LxWxH) : 750x400x500mm



- Aircool
- Single phase, 220V
- Diameter of blade : 44mm



Disinfected garment



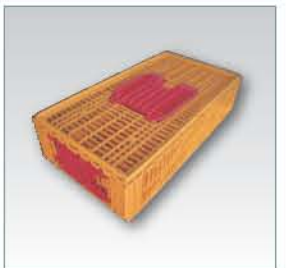
Sterilization plate for feet



Ultrasound pregnancy scanner for swine



Pig backfat thickness measuring scanner



Poultry crate scanner

Our composting facility

- **Function to blend sludge and other products**
It's possible to flip enough to mix sludge and other products
- **Transfer function**
Sequential moves of raw materials are available
- **Porosity of the material increases**
porosity of the material increases by mixing, and ventilation can be maintained
- **Shortened drying time**
promoted fermentation by stirring reduces the drying time



Important features and advantages of our core technologies

- 1) Bi-direction move (back and forth) stirring makes it possible to be used even in farms with narrow ripening facilities.
- 2) Aerobic high temperature (around 70 Celsius) fermentation, stirring and crushing lead to produce high quality compost product with low moisture content.
- 3) Width, length and height of the agitator can be customized to suit the farm's situation.
- 4) No need for additional accumulation type fermentation tank and consecutive recycling of expensive sawdust make the burden of farmers significantly reduced.
- 5) Inexpensive, trouble-free and easy to operate by using P.L.C method (Automatic Control System).
- 6) Top plate of the escalator is the stainless steel to prevent corrosion.
- 7) Prefabricated production is easy to attach and remove.
- 8) The overall coating is through the process of antirust once and concoction twice to prevent corrosion and to consider the appearance as well.
- 9) With prefabricated production easy to attach and remove, making brief eye can check any equipment malfunction, so that it's easy to repair, low repair cost and long life as well.
- 10) Exclusive hydraulic systems, motors, electrical components are used for the best efficiency with no small malfunction.



Pellet Forming and Packaging Facilities



- Improved Quality
- Cost saving
- Productivity
- Efficiency and Profitability
- Increased Flexibility
- Enhanced Product Image
- Effective Production Process Management
- Achieved Economies of Scale
- Increased Market Share
- Increased Customer Trust
- Improved Service Quality



• The structure

Outer surface of the follicles which largely hung in the collector room in the dust filter is to do the dust collection of dust containing gas. There are several kinds of dust filter according to follicles, filtration rate, and the way to remove dust gathered.

• Applications

- Ceramics, rubber, pharmaceutical manufacturing plant
- Textile, chemical plants
- Metal processing plants, dust removal in the other industrial field, rubber products manufacturing



• The structure

- Gas absorption and dust removal is possible at the same time.
- Collection and neutralization of corrosive gases and mist.
- Cooling and cleaning of gas with high temperature and moisture.
- No risk of dust explosion.
- Toxic gas treatment efficiency is more than 95%.

• Applications

- Chemical manufacturing plant, food odor removal facilities
- Glass furnace plant, plating facilities
- Ammonia emission plant, other toxic gases manufacturing plant
- Petroleum refining facilities, downstream of the incinerator facility



• The structure

- The design is simple and easy maintenance.
- Small installation space.
- Continuous operation of cyclone is possible.
- Low pressure-loss
- Easy to handle large particles of dust
- It is not affected by inlet temperature.
- Low cost.
- Easy to install at any workplace.

• Applications

- Pretreatment of prevention facilities
- Wood, cement, fertilizer, paper dust
- Food and pharmaceutical dust