



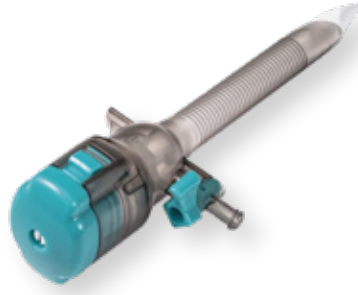
 **Disposable
Laparoscopic
Instruments**



CORE-Trocar



12mm Type



10mm Type



8mm Type

Product Description

Core-Trocar is a disposable sterile medical device, **consisting of a cannula to secure the insertion path of surgical instruments and a trocar to facilitate laparoscope insertion.**

It is designed to perforate to insert medical instruments during laparoscopy.

Product Features

| | |
|------------------------------------|--|
| Ergonomic Design | Designed to perforate with low force and as comfortable grip for user |
| Safety of Use | Minimizes body damages as a bladeless product |
| Cannula Separation Function | To conveniently remove impurities generated during the surgical procedure (8/10/12mm type) |
| Air-Tightness | Excellent ability to maintain air-tightness through double sealing structure |
| Serration Process | Serrated shape of cannula surface which does not come out easily during surgery |



5mm Type

3mm Type

2mm Type

Product Specification

(Unit : mm)

| No. | Type | Model | Cannula Inner Diameter | Cannula Length (without head) | Components |
|-----|-----------|----------|------------------------|-------------------------------|---------------------------|
| 1 | 2mm Type | IC-TC02S | 2.3 | 100 (50) | Cannula 1ea Trocar 1ea |
| 2 | | IC-TC02 | 2.3 | 125 (80) | Cannula 1ea Trocar 1ea |
| 3 | 3mm Type | IC-TC03S | 3.5 | 100 (50) | Cannula 1ea Trocar 1ea |
| 4 | | IC-TC03 | 3.5 | 125 (80) | Cannula 1ea Trocar 1ea |
| 5 | 5mm Type | IC-TC05S | 5.9 | 100 (50) | Cannula 1ea Trocar 1ea |
| 6 | | IC-TC05 | 5.9 | 125 (80) | Cannula 1ea Trocar 1ea |
| 7 | | IC-TC05L | 5.9 | 140 (100) | Cannula 1ea Trocar 1ea |
| 8 | 8mm Type | IC-TC08 | 8.0 | 130 (80) | Cannula 1ea Trocar 1ea |
| 9 | 10mm Type | IC-TC10 | 11.7 | 150 (100) | Cannula 1ea Trocar 1ea |
| 10 | 12mm Type | IC-TC12 | 12.8 | 150 (100) | Cannula 1ea Trocar 1ea |

CORE-SPORT

Product Description

CORE-SPORT is a disposable medical device that **opens and enlarges the incision area during laparoscopy.** Port-Assay combined with the Retractor is used as a passage for surgical instruments and Retractor is used to expand the passage of the surgical unit.



Port-Assay A + Retractor



Port-Assay A



Retractor

Product Features

- Port Rotation Function** Rotatable port that connects the port and surgical instruments to maximize user convenience
- One-Touch Structure** One-touch structure on the connection parts between Port-Assay A and Retractor to make it convenient to combine and separate the product
- Air-Tightness** Excellent ability to maintain air-tightness through double sealing structure

Product Specification

| No. | Type | Model | 5mm Port | 12mm Port | Total Port | Total Height(mm) |
|-----|--------------------------|---------|----------|-----------|------------|------------------|
| 1 | Port Assay A + Retractor | IC-SP01 | 1ea | 2ea | 3ea | 84/160 |
| 2 | Retractor | IC-SP04 | 2ea | 2ea | 4ea | 84/160 |
| 3 | Retractor | IC-SR01 | - | - | - | 160 |

CORE-SPORT (Glove type)



Port-Assay B + Retractor



Port-Assay B



Retractor

Product Features

Convenient Combination Easy to attach and detach retractor when in use

Usability Non-irritating to the patient's skin in contact with the surgical site as silicone material

Product Specification

| No. | Type | Model | 5mm Port | 12mm Port | Total Port | Total Height(mm) |
|-----|--------------------------|---------|----------|-----------|------------|------------------|
| 1 | Port Assay B + Retractor | IC-SP06 | 1ea | 2ea | 3ea | 84/160 |
| 2 | Retractor | IC-SP09 | 2ea | 2ea | 4ea | 84/160 |
| 3 | Retractor | IC-SR01 | - | - | - | 160 |

CORE-SMOFIL



Externals

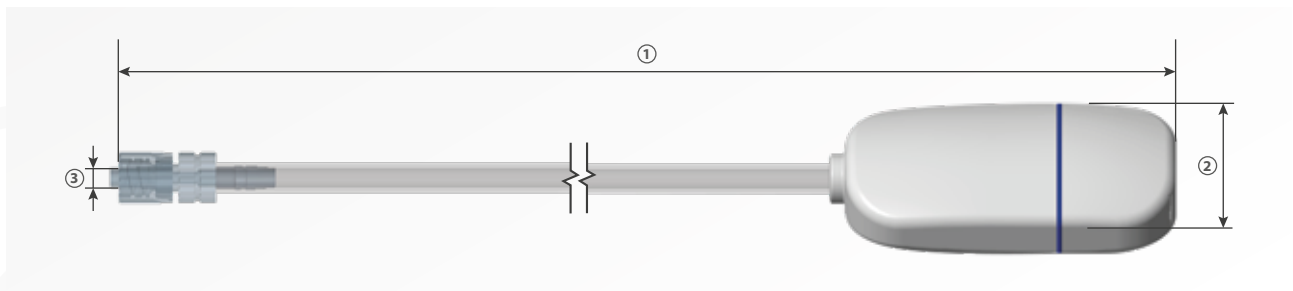


Inside of the Filter

Product Description

CORE-SMOFIL is a disposable sterile medical device used **to protect patients and medical staffs by adsorbing harmful gas during surgery.**

When harmful gas is generated during surgery, CORE-SMOFIL is connected to the valve attached to the CORE-Trocar to absorb harmful gas with the filter.



(Unit : mm)

| Model | ① | ② | ③ |
|---------|-------|----|---|
| IC-SM02 | 374.2 | 35 | 4 |

HEMOBLOCK (Hemostatic Gauze for Laparoscopy)



Out Box



Gauze

Product Description

HEMOBLOCK is a **chitosan dressing** made to form a protective film on injuries and causes blood clotting to become hemostasis.

It can absorb blood to **help secure a clear view and prevent infection** when used for laparoscopy.

Hemostasis




High
Absorbability

Anti
Bacterial

Bio
Compatibility

Non Toxicity

Product Specification

| Type | Gauze | | | | | | | Circular Type | Conical Type |
|-----------|---|---|---|---|---|---|---|---|---|
| Shape |  |  |  |  |  |  | |  |  |
| Model No. | IC-HB2003 | IC-HB4004 | IC-HB3008 | IC-HB3024 | IC-HB3040 | IC-HB3079 | IC-HB3118 | IC-HBC001 | IC-HBC002 |
| Size (cm) | 7.5 x 5 | 10 x 10 | 7.5 x 20 | 7.5 x 20 | 7.5 x 100 | 7.5 x 200 | 7.5 x 300 | Ø3.0 | Ø2.7 - 3.3 |
| Package | 1pc / Bag | 1pc / Bag | 1pc / Bag | 3pcs / Bag | 1pc / Bag | 1pc / Bag | 1pc / Bag | 1pc / Bag | 1pc / Bag |



INCORE Co., Ltd.

Head Office 11, Hyeoksin-daero 78-gil, Dong-gu, Daegu, Republic of Korea
Tel. +82-2-866-3514 Fax. +82-2-6919-1346 www.incoremedi.com