



K-Food Tech Co. , Ltd.



K-Food Tech Co. , Ltd.

<http://k-foodtech.com>

Raw materials selected from clean areas and clean seas are used under optimal conditions.

'K-Food Kim(Seaweed)'

K-Food Tech Co., Ltd.

seasoned seaweed products

, produced , and continued to search for healthy tastes.

With effort and We have continued to develop .

Creating new tastes that are hygienic for consumers

Provides healthy taste ..



K-Food

Product Name : K-Food Sophisticated Kimzaban (giraffe)

500g (2012kcal) | ORIGINAL



- * Food type : Seasoned seaweed
- * Product specifications
26Cm (width), 34Cm (height)
- * Contents : 500g
- * Food ingredients
Dolkim (Korea) 46%
Corn oil (USA , Brazil , Russia) 32%
Sesame Oil (Myanmar , Vietnam , India) 7% , Refined sugar , refined salt , soybean powder , olive oil
- * Packaging material : Polypropylene (inner packaging)

Nutrition information		Total content 500 g
		2,012 kcal
per 100 g		Daily nutritional information
		Ratio to baseline
sodium	0.2 mg	9 %
carbohydrate	7.9 g	2 %
sugar	2.2 g	2 %
protein	11.8 g	22 %
trans fat	0 g	
saturated fat	1.5 g	10 %
cholesterol	0.1 g	19 %
protein	5.8 g	11 %
dietary fiber	1.5 g	6 %

The percentages for the daily nutritional reference value (%) are based on 2,000 kcal, so they may vary depending on individual calorie needs.

K-Food

Product Name : K-Food Sophisticated Kimzaban (giraffe)

40g (161kcal) | ORIGINAL



* Food type : Seasoned seaweed

* Product specifications
22Cm(Width), 16Cm(Height)

* Contents : 40g

* Food ingredients

Dolkim (Korea) 46%

Corn oil (USA , Brazil , Russia) 32%

Sesame Oil (Myanmar , Vietnam , India) 7%

Refined sugar , refined salt , soybean powder , olive oil

* Packaging material : Polypropylene
(inner packaging)

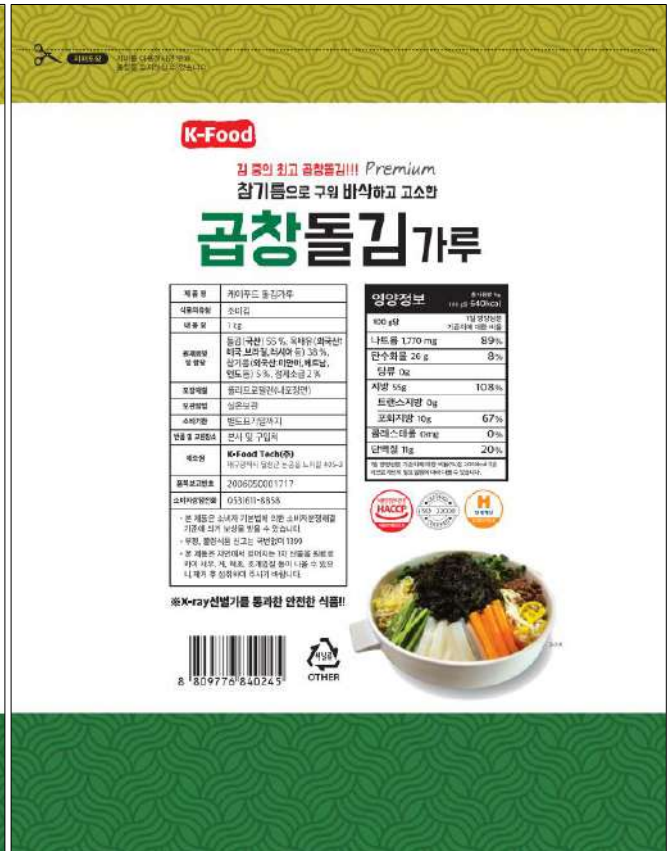
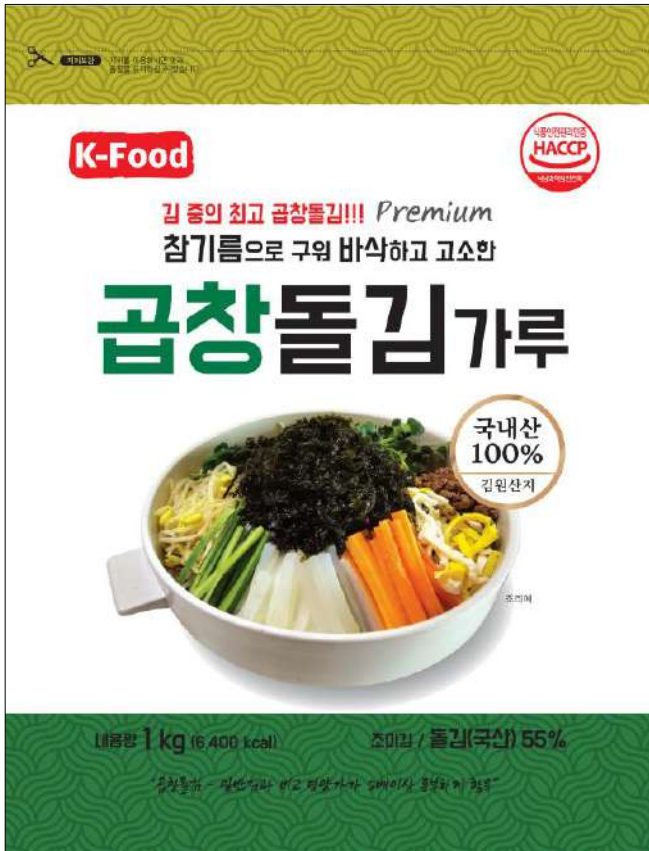
Nutrition information Total content 40g per

Percentage of daily nutritional value per 100g		
sodium	0.2 mg	9 %
carbohydrate	7.9 g	2 %
sugar	2.2 g	2 %
protein	11.8 g	22 %
trans fat	0 g	0 %
saturated fat	1.5 g	10 %
cholesterol	0.1 g	19 %
protein	5.8 g	11 %
dietary fiber	1.5 g	6 %

K-Food

Product Name : K-Food Dol-Kim (seaweed) debris

1kg (6400kcal) | Crispy and savory baked in sesame oil



* Food type : Seasoned seaweed

* Product specifications :

37Cm (width), 48Cm (height)

* Contents : 1kg

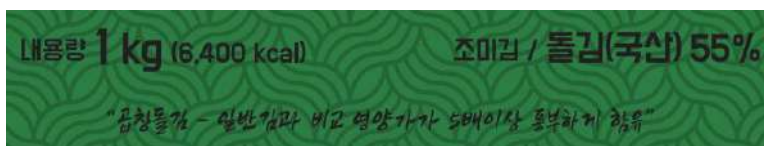
* Food ingredients

Dolkim (Korea) 55%

Corn oil (USA , Brazil , Russia) 38%

Sesame Oil (Myanmar , Vietnam , India)

Nutrition information		Total content 1kg 6400kcal per 100g
Per 100g	Daily nutritional information Ratio to baseline	
Sodium 1,770 mg		89%
carbohydrate 26 g		8%
Sugar 0g		
55g fat		108%
trans fat 0g		
saturated fat 10g		67%
cholesterol 0mg		0%
11g protein		20%
The percentage of daily nutritional value (%) is based on 2,000 kcal, so it may vary depending on individual calorie needs.		



K-Food

Product Name : Sophisticated taste Kimzaban

50g (201kcal) | It tastes even better when stir-fried with sesame oil.



* Food type : Seasoned seaweed

* Product specifications :

22Cm (width), 16Cm (height)

* Contents : 50g

* Food ingredients

Dolkim (Korea) 46%

Corn oil (USA , Brazil , Russia) 23%

Sesame Oil (Myanmar , Vietnam , India) 7% Sugar, roasted sesame seeds, refined salt, Soybean powder

Nutrition information		Total content 50 g 201 kcal	
Per total content		Ratio to baseline	
sodium	0.2 mg	11 %	
carbohydrate	9.8 g	3 %	
sugar	2.7 g	3 %	
protein	14.8 g	27 %	
trans.fat	0 g		
saturated fat	1.9 g	13 %	
cholesterol	0 mg	0 %	
protein	7.3 g	13 %	

The percentages for the daily nutritional reference value (%) are based on 2,000 kcal, so they may vary depending on individual calorie needs.

K-Food

Product name : Kim Sarang Kim(seaweed) debris Kimchi flavor

45g (241kcal) | Seasoned seaweed debris Kimchi flavor



* Food type : Seasoned seaweed

* Product specifications :

18Cm (width), 23Cm (height)

* Contents : 45g

* Food ingredients

Kim(Korea), corn oil , sesame oil ,
Kimchi powder (kimchi seasoning
red pepper powder , sugar ,
Glucose , garlic powder, etc.)
(including soybeans and beef) ,
Sesame oil , sugar , salt

Nutritional information per bag (45g)

energy	241 kcal
protein	6.6 g
lipid	18.8 g
carbohydrates	15.0 g
-carbohydrate	7.6 g
-Dietary fiber	7.4 g
Salt equivalent amount	2.1 g

General Water Research Institute, Inc. Analysis

values: The values shown are for reference only.



K-Food Tech Co. , Ltd.

K-Food Tech (Co., Ltd.)

<http://k-foodtech.com>

E-mail : gockim@naver.com