

CareCella

CareCella Skin Innovator

* This document is meant only for internal training and shall be kept confidential. It is prohibited to disclose or post any information included in this document



CareCella Skin Innovator

케어셀라 스킨이노베이터

1. Product Details
2. Product Features
3. Highly Elastic Film-forming Mechanism
4. Main Ingredients
5. How to Use
6. Before & After
7. Recommended for

* This material is for internal educational purposes and cannot be taken out or posted externally.



1. Product Details

- + **Effects:** Relief from dry skin-induced itching, skin protection, and moisturizing.
- + **Passed the skin irritation test, DERMATEST, in Germany.**
- + **Main Ingredients:** Beta-glucan, Propolis wax, Ginsenoside, Allantoin, Centella Asiatica, 9 Types of Plant Extracts
- + **Volume: 50mL**
- + **Frequency:** Once or twice a day, applicable time to time
- + **Area:** Face (reddish and itchy areas due to dry skin, spots requiring moisturization),
Body



2. Product Features

+ Fast-Acting

Fast Relief of itching caused by dry skin.

+ Applies formula to form elastic, flexible and fine Water-soluble film.

Washable in water and allows free skin movement.

+ Peel-off-type pack with rich mask

Significant effects for anti-aging and exfoliation as a peel-off-type pack.

+ Film formed (moisturizing band) to provide a moist environment that protects the skin.

Nurtures skin rapidly to return to normal condition.

+ Film contains no acetone or antiseptics

Only skin-deep ingredients proven to be safe are used (tested for skin irritation).

+ Applicable Part

Can be used on face and body

****For sensitive skin, do not peel off, but gently rinse with water.**

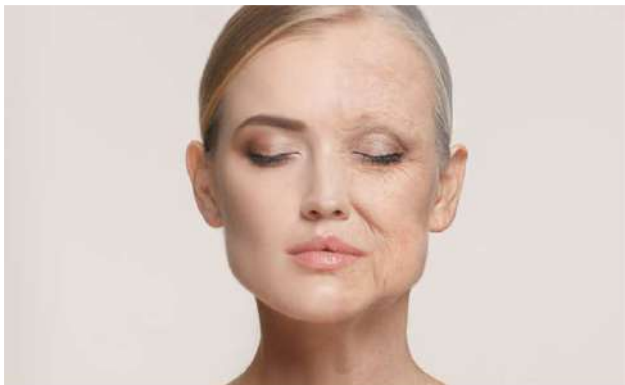


2. Product Features



+ **Maximized Skin Protection with an Outstanding Film-Forming Formula**

Forms a flexible layer that protects the skin from harmful environments while creating a moist environment that enhances skin flexibility and smoothness. The superior film-forming formula allows for natural skin movement, making it suitable for use on both the face and body.



+ **Anti-Wrinkle Improvement**

Contains adenosine, a wrinkle-improving ingredient, which helps reduce the appearance of wrinkles.

2. Product Features



+ **Maintain optimal skin condition**

Contains Beta-glucan, Propolis wax, Ginsenoside Rg2, Allantoin, Centella Asiatica and 9 Types of Plant Extracts which maintain optimal skin condition.



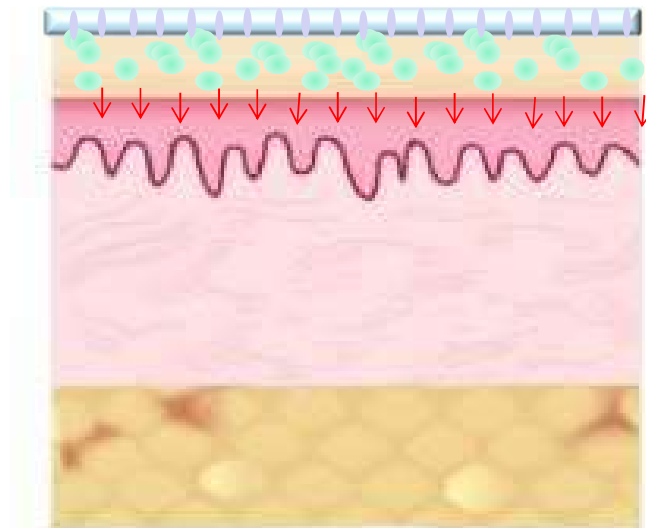
+ **This product has passed the skin irritation test, DERMATEST, in Germany.**

3. High Elastic Film-forming Mechanism

+ Water-soluble Film

+ Active Ingredient

+ Skin



+ **Protection induced by formation of film**

Establishes a moist environment through formation of water-soluble film

+ **Relieves itching caused by dry skin**

Includes beta-glucan, allantoin, Asiatic pennywort and 9 other plant extracts

+ **Enhancement of skin barrier**

Includes Ginsenoside, RG2 and other compounds.

4. Main Ingredients



베타글루칸

버섯류, 곡류, 효모의 세포벽 등에 존재하는 물질로 피부 보호와 장벽 강화에 도움을 주고, 피부결 향상에 도움을 줍니다.

프로폴리스왁스

피부에 유수분 보습막을 형성하는데 도움을 줍니다.



병풀추출물

피부 진정에 도움을 줍니다.



알란토인

피부 진정에 도움을 주고, 피부 보습에 도움을 줍니다.



진세노사이드

피부 장벽 강화에 도움을 줍니다.

식물추출물 9가지
알로에베라잎추출물, 쐐기풀추출물 등 피부 보습 및 영양공급에 도움을 줍니다.



원료적 특성에 한함

5. How to Use - Face



*** When using as a sleeping mask:**

After generously applying a moisturizing serum and nourishing cream, apply the mask. Wash it off the next morning after waking up.

5. How to Use - Body



***Removing Film**

Gently peel of the film next morning.

If you have sensitive skin, rinse after removing.

6. Before & After (Face)

+ Applied as a facial Peel-off pack



Before use

After use



6. Before & After (Neck)

+ Body Application_Back of Neck



Before use

After use



6. Before & After (Body)

+ Body Application_Back of Knee



Before use



After 1st Application (15 min.)



After 2nd Application (15 min.)



After 3rd Application (15 min.)



6. Before & After (Body)

+ Body Application_Chelidon (Inside of Elbow)



Before use



After 1st Application (15 min.)



7. Recommended for

- ✓ For those who want to protect their skin from harmful environments
- ✓ For those concerned about skin wrinkles
- ✓ For those who want to care for their skin with soothing products overnight
- ✓ For those looking to use one product in multiple ways
- ✓ For those seeking a sleeping mask

