



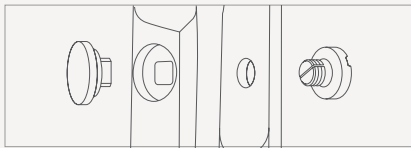
matsukaze

scissors

Matsukaze Bolts

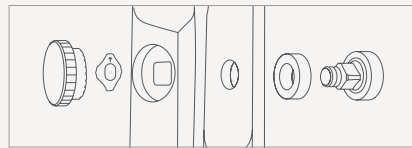
Every process is important in making scissors, but above all, bolts that combine two blades into one are important. Have a check our scissors bolt features for better understanding.

General Bolt



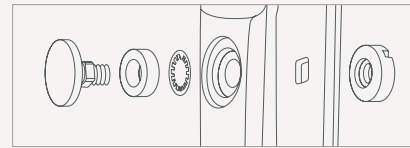
This is the most general bolt. Because of its simple structure, it performs very stably.

Bearing Bolt



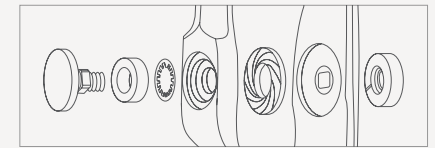
Bearing bolt looks very similar with general bolts, but you can tighten this bolt with your hands! Elaborate structure makes your scissors open and close softly.

Flat Bearing Bolt



Flat Bearing Bolt scissors get into your scissors tray or case very comfortably and easily. This FLAT designed bolt doesn't get stuck when you store your scissors and will smoothly get in your scissors bag!

Spin Bolt



Spin Bearing Bolt has just similar structure with flat bearing bolt but there's an additional disk between two blades, and it performs very smoothly when you open and close your scissors.

* The image may be slightly different from its original color.

AC-55H (5.5")



General Bolt | Offset | Convex Blade
\$ 220.00

HANA-55 (5.5")



General Bolt | Offset | Convex Blade
\$ 350.00

HANA-58 (5.8")



General Bolt | Offset | Convex Blade
\$ 350.00

RHEA-55K (5.5")



Flat Bolt | Offset | Sword Blade
\$ 400.00

RHEA-58K (5.8")



Flat Bolt | Offset | Sword Blade
\$ 400.00

RHEA-61K (6.1")



Flat Bolt | Offset | Sword Blade
\$ 400.00

TORY-55 (5.5")



General Bolt | Offset | Sword Blade
\$ 320.00

TORY-60 (6.0")



General Bolt | Offset | Sword Blade
\$ 320.00

NEMO-55 (5.5")



General Bolt | Offset | Convex Blade
\$ 350.00

NEMO-58 (5.8")



General Bolt | Offset | Convex Blade
\$ 350.00

NEMO-60 (6.0")



General Bolt | Offset | Convex Blade
\$ 350.00

M1-50 (5.0")



General Bearing Bolt | Offset | Convex Blade
\$ 420.00

M1-55 (5.5")

General Bearing Bolt | Offset | Convex Blade
\$ 420.00

M1-60 (6.0")

General Bearing Bolt | Offset | Convex Blade
\$ 420.00

M2-50 (5.0")

General Bearing Bolt | Offset | Convex Blade
\$ 340.00

M2-55 (5.5")

General Bearing Bolt | Offset | Convex Blade
\$ 340.00

M2K-55S (5.5")

General Bearing Bolt | Standard | Convex Blade
\$ 430.00

M3-55K (5.5")

Flat Bolt | Semi-Offset | Sword Blade
\$ 520.00

M3-55H (5.5")

Flat Bolt | Semi-Offset | Convex Blade
\$ 520.00

M3-58K (5.8")

Flat Bolt | Semi-Offset | Sword Blade
\$ 520.00

M3-58H (5.8")

Flat Bolt | Semi-Offset | Convex Blade
\$ 520.00

M3-63K (6.3")

Flat Bolt | Semi-Offset | Sword Blade
\$ 520.00

M3-63H (6.3")

Flat Bolt | Semi-Offset | Convex Blade
\$ 520.00

M5-56 (5.6")

Spin Bolt | Offset | Convex Blade
\$ 470.00

M6-55 (5.5")



Flat Bolt | Offset | Sword Blade
\$ 680.00

M6-58 (5.8")



Flat Bolt | Offset | Sword Blade
\$ 680.00

M6II-55 (5.5")



Flat Bolt | Offset | Convex Blade
\$ 680.00

M6II-58 (5.8")



Flat Bolt | Offset | Sword Blade
\$ 680.00

M7-55 (5.5")



Spin Bolt | Semi-Offset | Convex Blade
\$ 700.00

M7-58 (5.8")



Spin Bolt | Semi-Offset | Convex Blade
\$ 700.00

M8-55 (5.5")



Spin Bolt | Semi-Offset | Convex Blade
\$ 800.00

M8-58 (5.8")



Spin Bolt | Semi-Offset | Convex Blade
\$ 800.00

MA1-55 (5.5")



Spin Bolt | Semi-Offset | Sword Blade
\$ 700.00

MA1-58 (5.8")



Spin Bolt | Semi-Offset | Sword Blade
\$ 700.00

MA1-61 (6.1")



Spin Bolt | Semi-Offset | Sword Blade
\$ 700.00

MAX-55 (5.5")



General Bearing Bolt | Offset | Convex Blade
\$ 510.00

MAX-63 (6.3")

General Bearing Bolt | Offset | Convex Blade
\$ 510.00

MC1-45SM (4.5")

General Bolt | Standard | Convex Blade
\$ 250.00

MC1-50SM (5.0")

General Bolt | Standard | Convex Blade
\$ 250.00

MC1-55SM (5.5")

General Bolt | Standard | Convex Blade
\$ 250.00

MK-56 (5.6")

Spin Bolt | Semi-Offset | Convex Blade
\$ 640.00

MK-58 (5.8")

Spin Bolt | Semi-Offset | Convex Blade
\$ 640.00

MK-61 (6.1")

Spin Bolt | Semi-Offset | Convex Blade
\$ 640.00

MS-55 (5.5")

Spin Bolt | Offset | Sword Blade
\$ 800.00

MS-60 (6.0")

Spin Bolt | Offset | Sword Blade
\$ 800.00

MY-55 (5.5")

Spin Bolt | Standard | Convex Blade
\$ 700.00

ANGEL-50H (5.0")

Flat Bolt | Offset | Convex Blade
\$ 700.00

ANGEL-56K (5.6")

Flat Bolt | Offset | Sword Blade
\$ 700.00


ANGEL-56H (5.6")



 Flat Bolt | Offset | Convex Blade
\$ 700.00

ANGEL-60K (6.0")



 Flat Bolt | Offset | Sword Blade
\$ 700.00

ANGEL-60H (6.0")



 Flat Bolt | Offset | Convex Blade
\$ 700.00

APOLLON-55KA (5.5")



 Flat Bolt | Offset | Sword Blade
\$ 400.00

APOLLON-60KA (6.0")



 Flat Bolt | Offset | Sword Blade
\$ 400.00

STELLA-55KB (5.5")



 Flat Bolt | Offset | Sword Blade
\$ 400.00

STELLA-60KB (6.0")



 Flat Bolt | Offset | Sword Blade
\$ 400.00

STORM-56K (5.6")



 Flat Bolt | Offset | Sword Blade
\$ 800.00

STORM-60K (6.0")



 Flat Bolt | Offset | Sword Blade
\$ 800.00

ORIX-56K (5.6")



 Spin Bolt | Semi-Offset | Sword Blade
\$ 900.00

ORIX-60K (6.0")



 Spin Bolt | Semi-Offset | Sword Blade
\$ 900.00

ARES-55 (5.5")



 Spin Bolt | Offset | Sword Blade
\$ 1,120.00

ARES-60 (6.0")



Spin Bolt | Offset | Sword Blade
\$ 1,120.00

MC5-60KB (5.0")



Bearing Bolt | Offset | Sword Blade
\$ 340.00

VEGA-55 (5.5")



Bearing Bolt | Offset | Convex Blade
\$ 300.00

ACT-25



General Bolt | Offset | 15% cut, 24 teeth / 1 Shape
\$ 260.00

ANGEL-1723



Flat Bolt | Offset | 17% cut, 23 teeth
\$ 700.00

ANGEL-2329



Flat Bolt | Offset | 23% cut, 29 teeth
\$ 700.00

ANGEL-3027



Flat Bolt | Offset | 30% cut, 27 teeth
\$ 700.00

ANGEL-3323



Flat Bolt | Offset | 33% cut, 23 teeth
\$ 700.00

ANGEL-4017



Flat Bolt | Offset | 35% cut, 17 teeth
\$ 700.00

BANANA-2735



Spin Bolt | Offset | 27% cut, 35 teeth
\$ 520.00

CARROT-2329



General Bearing Bolt | Offset | 23% cut, 29 teeth
\$ 400.00

HANA-15



General Bearing Bolt | Offset | 15% cut, 27 teeth / U Shape
\$ 380.00

HANA-25



General Bearing Bolt | Offset | 25% cut, 29 teeth
\$ 380.00

M2K-3025B



General Bearing Bolt | Standard | 20% cut, 25 teeth
\$ 400.00

M2T-32



General Bearing Bolt | Standard | 20~23% cut, 32 teeth
\$ 350.00

M3-1527

Flat Bolt | Offset | 15% cut, 27 teeth
\$ 530.00

M3-2333

Flat Bolt | Offset | 23% cut, 33 teeth
\$ 530.00

M3-3029

Flat Bolt | Offset | 30% cut, 29 teeth
\$ 530.00

M3-4523

Flat Bolt | Offset | 45% cut, 23 teeth
\$ 530.00

M5T-17

Spin Bolt | Offset | 50% cut, 17 teeth
\$ 530.00

M6T-29BS

Spin Bolt | Semi-Offset | 15% cut, 17 teeth
\$ 620.00

M6T-29BB

Spin Bolt | Semi-Offset | 15% cut, 29 teeth (Reverse)
\$ 620.00

M8T-33

Spin Bolt | Semi-Offset | 18% cut, 33 teeth
\$ 800.00

MOMIJI-10

Spin Bolt | Standard | 10% cut, 29 teeth
\$ 600.00

MOMIJI-20

Spin Bolt | Standard | 20% cut, 29 teeth
\$ 600.00

MSM-3027

Flat Bolt | Standard | 30% cut, 27 teeth
\$ 800.00

MT1-32

General Bearing Bolt | Standard | 25% cut, 32 teeth
\$ 420.00

MTI-34



General Bearing Bolt | Standard | 30% cut, 34 teeth
\$ 420.00

NEMO-15



General Bolt | Offset | 15% cut, 27 teeth
\$ 350.00

NEMO-25



General Bolt | Offset | 25% cut, 30 teeth / 6.3"
\$ 350.00

PONYTAIL-2329



General Bearing Bolt | Standard | 23% cut, 29 teeth
\$ 400.00

PONYTAIL-3027



General Bearing Bolt | Standard | 30% cut, 3 teeth
\$ 400.00

RHEA-10



Flat Bolt | Offset | 40% cut, 10 teeth
\$ 400.00

RHEA-25



Flat Bolt | Offset | 20% cut, 25 teeth
\$ 400.00

RHEA-30



Flat Bolt | Offset | 30% cut, 25 teeth
\$ 400.00

RHEA-35



Flat Bolt | Offset | 35% cut, 25 teeth
\$ 400.00

PILOT-2326



Bearing Bolt | Offset | 20~25% cut
\$ 600.00

VEGA-15



Bearing Bolt | Offset | 15% cut
\$ 300.00

VEGA-25



Bearing Bolt | Offset | 25% cut
\$ 300.00

REX-4014



Bearing Bolt | Offset | 35~40% cut
\$ 600.00

REX-2029



Bearing Bolt | Offset | 20~25% cut
\$ 600.00

MA2-68 (6.8")

Spin Bolt | Semi-Offset | Convex Blade
\$ 650.00

MA2-70 (7.0")

Spin Bolt | Semi-Offset | Convex Blade
\$ 650.00

MC3-65H (6.5")

Bearing Bolt | Offset | Convex Blade
\$ 530.00

MC3-65K (6.5")

Bearing Bolt | Offset | Sword Blade
\$ 530.00

MC3-68K (6.8")

Bearing Bolt | Offset | Sword Blade
\$ 530.00

MC3-70H (7.0")

Bearing Bolt | Offset | Convex Blade
\$ 530.00

MC3-70K (7.0")

Bearing Bolt | Offset | Sword Blade
\$ 530.00

MS-65 (6.5")

Spin Bolt | Offset | Sword Blade
\$ 800.00

M8-68 (6.8")

Spin Bolt | Offset | Convex Blade
\$ 800.00

ECCO-65 (6.5")

Spin Bolt | Offset | Convex Blade
\$ 680.00

ECCO-68 (6.8")

Spin Bolt | Offset | Convex Blade
\$ 680.00

NEMO-65 (6.5")

General Bolt | Offset | Convex Blade
\$ 350.00

NEMO-67 (6.7")



General Bolt | Offset | Convex Blade
\$ 350.00

NEMO-70 (7.0")



General Bolt | Offset | Convex Blade
\$ 350.00

RHEA-68K (6.8")



Flat Bolt | Semi-Offset | Sword Blade
\$ 410.00

RHEA-68H (6.8")



Flat Bolt | Semi-Offset | Convex Blade
\$ 410.00

RHEA-70K (7.0")



Flat Bolt | Semi-Offset | Sword Blade
\$ 410.00

RHEA-70H (7.0")



Flat Bolt | Semi-Offset | Convex Blade
\$ 410.00

SF1-68K (6.8")



Flat Bolt | Offset | Sword Blade
\$ 410.00

SF1-68H (6.8")



Flat Bolt | Offset | Convex Blade
\$ 410.00

SF1-70K (7.0")



Flat Bolt | Offset | Sword Blade
\$ 410.00

SF1-70H (7.0")



Flat Bolt | Offset | Convex Blade
\$ 410.00

ANGEL-68H (6.8")



Flat Bolt | Offset | Convex Blade
\$ 700.00

ANGEL-68K (6.8")



Flat Bolt | Offset | Sword Blade
\$ 700.00

MCI-68K (6.8")



Flat Bearing Bolt | Offset | Sword Blade
\$ 680.00

ORIX-68H (6.8")



Spin Bolt | Semi-Offset | Convex Blade
\$ 1,000.00

DRY I-58

 Flat Bolt | Offset | Convex Blade
\$ 600.00


DRY I-62

 Flat Bolt | Offset | Convex Blade
\$ 600.00

DRY II-58

 Flat Bolt | Standard | Convex Blade
\$ 600.00

DRY II-61

 Flat Bolt | Standard | Sword Blade
\$ 600.00

KC-58DRY

 Flat Bolt | Offset | Sword Blade
\$ 600.00


KC-60DRY

 Flat Bolt | Offset | Sword Blade
\$ 600.00

KC-63DRY

 Flat Bolt | Offset | Sword Blade
\$ 600.00

SC-56DS

 Flat Bolt | Standard | Sword Blade
\$ 600.00


SC-58DS

 Flat Bolt | Standard | Convex Blade
\$ 600.00


SC-61DS

 Flat Bolt | Standard | Convex Blade
\$ 600.00

PILOT-56DRY

 Bearing Bolt | Offset | Convex Blade
\$ 500.00

PILOT-60DRY

 Bearing Bolt | Offset | Convex Blade
\$ 500.00

M3L-55K (5.5")



Flat Bolt | Semi-Offset | Sword Blade
\$ 520.00

M3L-55H (5.5")



Flat Bolt | Semi-Offset | Convex Blade
\$ 520.00

M3L-58K (5.8")



Flat Bolt | Semi-Offset | Sword Blade
\$ 520.00

M3L-65K (6.5")



Flat Bolt | Semi-Offset | Sword Blade
\$ 520.00

MSL-525 (5.25")



General Bolt | Semi-Offset | Convex Blade
\$ 600.00

MSL-60 (6.0")



General Bolt | Semi-Offset | Convex Blade
\$ 600.00

SCL-56DS (5.6")



Flat Bolt | Standard | Convex Blade
\$ 580.00

SCL-58DS (5.8")



Flat Bolt | Standard | Convex Blade
\$ 580.00

SCL-61DS (6.1")



Flat Bolt | Standard | Convex Blade
\$ 580.00

M3L-2329



Flat Bolt | Offset | 23% cut, 29 teeth
\$ 550.00

M3L-3029



Flat Bolt | Offset | 30% cut, 29 teeth
\$ 550.00

M3L-10



Flat Bolt | Offset | 50% cut, 10 teeth
\$ 550.00